

For Research Use Only

# DCT Polyclonal antibody

Catalog Number: 13095-1-AP

18 Publications



## Basic Information

### Catalog Number:

13095-1-AP

### Size:

150ul, Concentration: 350 ug/ml by Nanodrop;

### Source:

Rabbit

### Isotype:

IgG

### Immunogen Catalog Number:

AG3714

### GenBank Accession Number:

BC028311

### GeneID (NCBI):

1638

### UNIPROT ID:

P40126

### Full Name:

dopachrome tautomerase  
(dopachrome delta-isomerase,  
tyrosine-related protein 2)

### Calculated MW:

519 aa, 59 kDa

### Observed MW:

59 kDa

### Purification Method:

Antigen affinity purification

### Recommended Dilutions:

WB 1:500-1:2000

IP 0.5-4.0 ug for 1.0-3.0 mg of total protein lysate

IHC 1:20-1:200

IF/ICC 1:200-1:800

## Applications

### Tested Applications:

WB, IHC, IF/ICC, IP, ELISA

### Cited Applications:

WB, IHC, IF

### Species Specificity:

human, mouse, rat, monkey

### Cited Species:

human, mouse, rat

### Positive Controls:

WB : HL-60 cells, A375 cells, A431 cells, COS-7 cells, MCF-7 cells, rat skin tissue

IP : HL-60 cells,

IHC : human skin tissue,

IF/ICC : A549 cells,

**Note-IHC: suggested antigen retrieval with TE buffer pH 9.0; (\*) Alternatively, antigen retrieval may be performed with citrate buffer pH 6.0**

## Background Information

DCT(L-dopachrome Delta-isomerase) is also named as TYRP2, TRP2 and belongs to the tyrosinase family. human TYRP2 protein has 83% identity and 90% similarity to the mouse sequence and has all the structural characteristics of the tyrosinase protein family, including a signal peptide, 15 conserved cysteine residues, 2 copper-binding domains, and a C-terminal membrane-spanning region(PMID:8206391).

## Notable Publications

Author	Pubmed ID	Journal	Application
O Igoucheva	23552473	Gene Ther	IF
Su Tzu-Rong TR	24129178	Int J Mol Sci	WB
Ethan D Buhr	31607531	Curr Biol	IF

## Storage

### Storage:

Store at -20°C. Stable for one year after shipment.

### Storage Buffer:

PBS with 0.02% sodium azide and 50% glycerol pH 7.3.

Aliquoting is unnecessary for -20°C storage

\*\*\* 20ul sizes contain 0.1% BSA

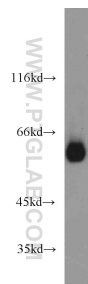
For technical support and original validation data for this product please contact:

T: 1 (888) 4PTGLAB (1-888-478-4522) (toll free in USA), or 1(312) 455-8498 (outside USA)

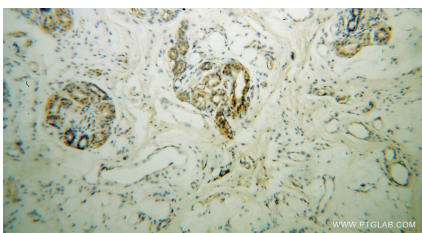
E: proteintech@ptglab.com  
W: ptglab.com

This product is exclusively available under Proteintech Group brand and is not available to purchase from any other manufacturer.

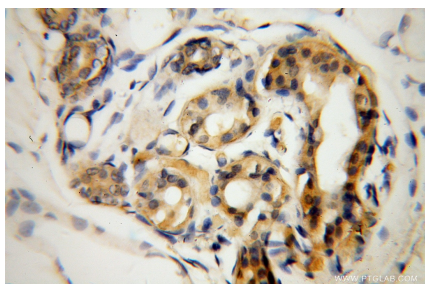
Selected Validation Data



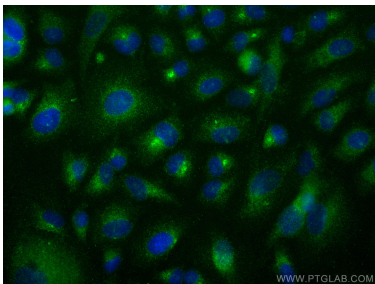
HL-60 cells were subjected to SDS PAGE followed by western blot with 13095-1-AP (DCT antibody) at dilution of 1:1000 incubated at room temperature for 1.5 hours.



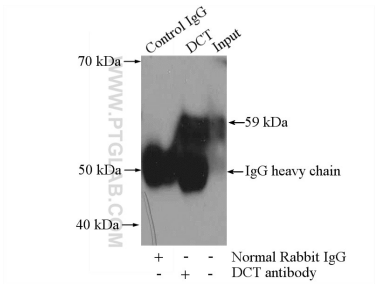
Immunohistochemical analysis of paraffin-embedded human skin using 13095-1-AP (DCT antibody) at dilution of 1:100 (under 10x lens).



Immunohistochemical analysis of paraffin-embedded human skin using 13095-1-AP (DCT antibody) at dilution of 1:100 (under 40x lens).



Immunofluorescent analysis of (-20°C Methanol) fixed A549 cells using DCT antibody (13095-1-AP) at dilution of 1:400 and CoraLite®488-Conjugated Goat Anti-Rabbit IgG(H+L).



IP result of anti-DCT (IP:13095-1-AP, 4ug; Detection:13095-1-AP 1:500) with HL-60 cells lysate 4000ug.