

For Research Use Only

# KIF2A Polyclonal antibody

Catalog Number: 13105-1-AP

Featured Product

16 Publications



## Basic Information

### Catalog Number:

13105-1-AP

### Size:

150ul, Concentration: 300 ug/ml by Nanodrop;

### Source:

Rabbit

### Isotype:

IgG

### Immunogen Catalog Number:

AG3748

### GenBank Accession Number:

BC031828

### GeneID (NCBI):

3796

### UNIPROT ID:

O00139

### Full Name:

kinesin heavy chain member 2A

### Calculated MW:

679 aa, 77 kDa

### Observed MW:

80-100 kDa

### Purification Method:

Antigen affinity purification

### Recommended Dilutions:

WB 1:1000-1:8000

IP 0.5-4.0 ug for 1.0-3.0 mg of total protein lysate

IHC 1:20-1:200

IF/ICC 1:250-1:1000

## Applications

### Tested Applications:

WB, IHC, IF/ICC, FC (Intra), IP, ELISA

### Cited Applications:

WB, IF, IP

### Species Specificity:

human, mouse, rat, canine

### Cited Species:

human, mouse

**Note-IHC: suggested antigen retrieval with TE buffer pH 9.0; (\*) Alternatively, antigen retrieval may be performed with citrate buffer pH 6.0**

### Positive Controls:

WB : HeLa cells, mouse brain tissue, rat brain tissue

IP : mouse brain tissue,

IHC : human breast cancer tissue,

IF/ICC : A549 cells, MDCK cells

## Notable Publications

Author	Pubmed ID	Journal	Application
Tianyu Wu	36395215	Science	IF
Junjie Huang	34137789	J Cell Biol	WB, IF
Xin Zhang	32106376	Biomed Pharmacother	WB

## Storage

### Storage:

Store at -20°C. Stable for one year after shipment.

### Storage Buffer:

PBS with 0.02% sodium azide and 50% glycerol pH 7.3.

Aliquoting is unnecessary for -20°C storage

\*\*\* 20ul sizes contain 0.1% BSA

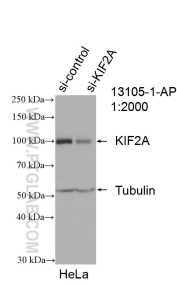
For technical support and original validation data for this product please contact:

T: 1 (888) 4PTGLAB (1-888-478-4522) (toll free in USA), or 1(312) 455-8498 (outside USA)

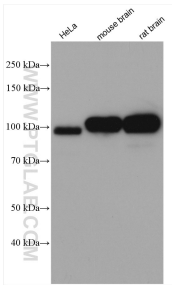
E: [proteintech@ptglab.com](mailto:proteintech@ptglab.com)  
W: [ptglab.com](http://ptglab.com)

This product is exclusively available under Proteintech Group brand and is not available to purchase from any other manufacturer.

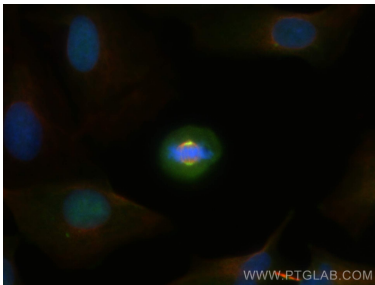
Selected Validation Data



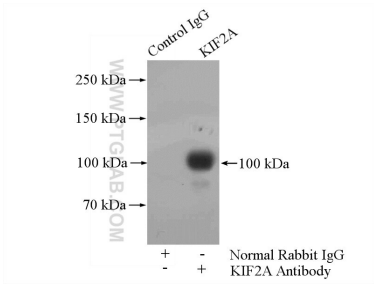
WB result of KIF2A antibody (13105-1-AP; 1:3000; incubated at room temperature for 1.5 hours) with sh-Control and sh-KIF2A transfected HeLa cells.



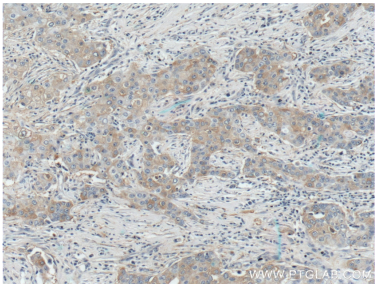
Various lysates were subjected to SDS PAGE followed by western blot with 13105-1-AP (KIF2A antibody) at dilution of 1:4000 incubated at room temperature for 1.5 hours.



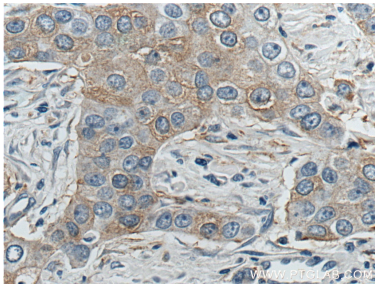
Immunofluorescent analysis of (4% PFA) fixed A549 cells using KIF2A antibody (13105-1-AP) at dilution of 1:500 and CoraLite®488-Conjugated Goat Anti-Rabbit IgG(H+L), Alpha Tubulin antibody (66031-1-Ig, Clone: 1E4C11, red).



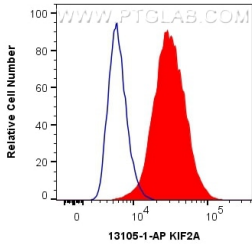
IP result of anti-KIF2A (IP:13105-1-AP, 4ug; Detection:13105-1-AP 1:1000) with mouse brain tissue lysate 4000ug.



Immunohistochemical analysis of paraffin-embedded human breast cancer tissue slide using 13105-1-AP (KIF2A Antibody) at dilution of 1:200 (under 10x lens).



Immunohistochemical analysis of paraffin-embedded human breast cancer tissue slide using 13105-1-AP (KIF2A Antibody) at dilution of 1:200 (under 40x lens).



1X10<sup>6</sup> A549 cells were intracellularly stained with 0.4 ug Anti-Human KIF2A (13105-1-AP) and CoraLite®488-Conjugated Goat Anti-Rabbit IgG(H+L) at dilution 1:1000 (red), or 0.4 ug Isotype Control. Cells were fixed with 4% PFA and permeabilized with Flow Cytometry Perm Buffer (PF00011-C).