

For Research Use Only

# MTHFS Polyclonal antibody

Catalog Number: 13114-1-AP



## Basic Information

### Catalog Number:

13114-1-AP

### Size:

150ul , Concentration: 240 ug/ml by Nanodrop and 140 ug/ml by Bradford method using BSA as the standard;

### Source:

Rabbit

### Isotype:

IgG

### Immunogen Catalog Number:

AG3781

### GenBank Accession Number:

BC019921

### GeneID (NCBI):

10588

### UNIPROT ID:

P49914

### Full Name:

5,10-methenyltetrahydrofolate synthetase (5-formyltetrahydrofolate cyclo-ligase)

### Calculated MW:

203 aa, 23 kDa

### Observed MW:

23 kDa

### Purification Method:

Antigen affinity purification

### Recommended Dilutions:

WB 1:1000-1:5000

IP 0.5-4.0 ug for 1.0-3.0 mg of total protein lysate

IHC 1:20-1:200

## Applications

### Tested Applications:

WB, IHC, IP, ELISA

### Species Specificity:

human, mouse, rat

**Note-IHC: suggested antigen retrieval with TE buffer pH 9.0; (\*) Alternatively, antigen retrieval may be performed with citrate buffer pH 6.0**

### Positive Controls:

**WB** : HeLa cells, human liver tissue, Jurkat cells, human stomach tissue, U-937 cells, L02 cells

**IP** : HeLa cells,

**IHC** : human liver cancer tissue,

## Storage

### Storage:

Store at -20°C. Stable for one year after shipment.

### Storage Buffer:

PBS with 0.02% sodium azide and 50% glycerol pH 7.3.

Aliquoting is unnecessary for -20°C storage

\*\*\* 20ul sizes contain 0.1% BSA

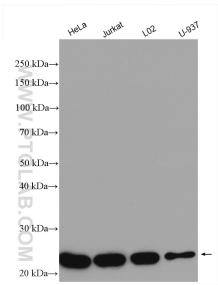
For technical support and original validation data for this product please contact:

T: 1 (888) 4PTGLAB (1-888-478-4522) (toll free in USA), or 1(312) 455-8498 (outside USA)

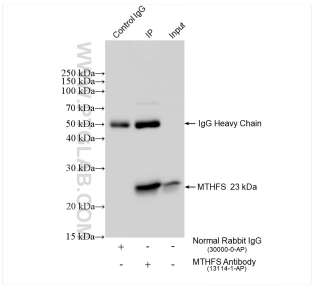
E: [proteintech@ptglab.com](mailto:proteintech@ptglab.com)  
W: [ptglab.com](http://ptglab.com)

This product is exclusively available under Proteintech Group brand and is not available to purchase from any other manufacturer.

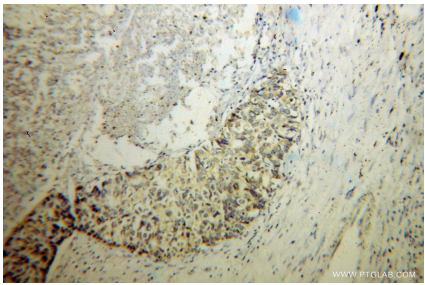
Selected Validation Data



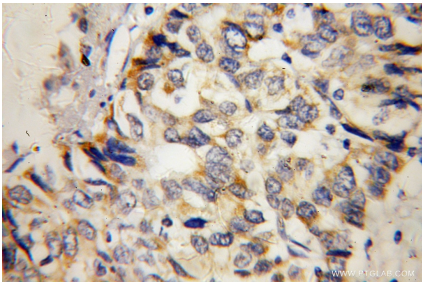
Various lysates were subjected to SDS PAGE followed by western blot with 13114-1-AP (MTHFS antibody) at dilution of 1:2500 incubated at room temperature for 1.5 hours.



IP result of anti-MTHFS (IP:13114-1-AP, 4ug; Detection:13114-1-AP 1:2000) with HeLa cells lysate 1200 ug.



Immunohistochemical analysis of paraffin-embedded human liver cancer using 13114-1-AP (MTHFS antibody) at dilution of 1:100 (under 10x lens).



Immunohistochemical analysis of paraffin-embedded human liver cancer using 13114-1-AP (MTHFS antibody) at dilution of 1:100 (under 40x lens).