

For Research Use Only

CCNL1 Polyclonal antibody

Catalog Number: 13138-1-AP



Basic Information

Catalog Number:

13138-1-AP

Size:

150ul, Concentration: 150 ug/ml by Nanodrop and 133 ug/ml by Bradford method using BSA as the standard;

Source:

Rabbit

Isotype:

IgG

Immunogen Catalog Number:

AG3731

GenBank Accession Number:

BC007081

GeneID (NCBI):

57018

UNIPROT ID:

Q9UK58

Full Name:

cyclin L1

Calculated MW:

526 aa, 60 kDa

Observed MW:

46 kDa

Purification Method:

Antigen affinity purification

Recommended Dilutions:

WB 1:500-1:1000

Applications

Tested Applications:

WB, ELISA

Species Specificity:

human, mouse, rat

Positive Controls:

WB : COLO 320 cells, PC-3 cells, MCF-7 cells

Background Information

CCNL1, also named as Cyclin-L1, contains a RS region and belongs to the cyclin family. CCNL1 localizes in the nucleus speckle and is Overexpressed in primary tumors of head and neck squamous cell carcinomas (HNSCC). CCNL1 as transcriptional regulator participates in regulating the pre-mRNA splicing process. It seems to be involved in the regulation of RNA polymerase II (pol II). CCNL1 functions in association with cyclin-dependent kinases (CDKs) and has a role in the second step of splicing. It may be a candidate proto-oncogene in head and neck squamous cell carcinomas (HNSCC). The calculated molecular weight of CCNL1 is about 55-60 kDa, but we detected a 40-50 kDa isoform by western blotting.

Storage

Storage:

Store at -20°C. Stable for one year after shipment.

Storage Buffer:

PBS with 0.02% sodium azide and 50% glycerol pH 7.3.

Aliquoting is unnecessary for -20°C storage

*** 20ul sizes contain 0.1% BSA

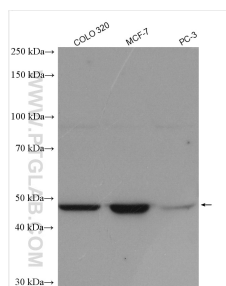
For technical support and original validation data for this product please contact:

T: 1 (888) 4PTGLAB (1-888-478-4522) (toll free in USA), or 1(312) 455-8498 (outside USA)

E: proteintech@ptglab.com
W: ptglab.com

This product is exclusively available under Proteintech Group brand and is not available to purchase from any other manufacturer.

Selected Validation Data



Various lysates were subjected to SDS PAGE followed by western blot with 13138-1-AP (CCNL1 antibody) at dilution of 1:800 incubated at room temperature for 1.5 hours.