

For Research Use Only

# GLRA3 Polyclonal antibody

Catalog Number: 13145-1-AP

2 Publications



## Basic Information

Catalog Number:

13145-1-AP

Size:

150ul, Concentration: 133 ug/ml by Nanodrop and 133 ug/ml by Bradford method using BSA as the standard;

Source:

Rabbit

Isotype:

IgG

Immunogen Catalog Number:

AG3702

GenBank Accession Number:

BC036086

GeneID (NCBI):

8001

UNIPROT ID:

O75311

Full Name:

glycine receptor, alpha 3

Calculated MW:

464 aa, 54 kDa

Observed MW:

54 kDa

Purification Method:

Antigen affinity purification

Recommended Dilutions:

WB 1:500-1:1000

## Applications

Tested Applications:

WB, ELISA

Cited Applications:

WB

Species Specificity:

human, mouse, rat

Cited Species:

human, mouse

Positive Controls:

WB : MCF7 cells,

## Background Information

Glycine is an inhibitory neurotransmitter in the central nervous system. The glycine receptor (GlyR) is a member of the nicotinic acetylcholine receptor of ligand-gated ion channels. This receptor has important roles in a variety of physiological processes, especially in mediating inhibitory neurotransmission in the spinal cord and brain stem. GlyR is a pentameric receptor comprised of alpha and beta subunits. Four alpha-subunits (GLRA1, GLRA2, GLRA3, GLRA4) and one beta-subunit (GLRB) of GlyR have been identified. (PMID: 11409700; 15383648)

## Notable Publications

Author	Pubmed ID	Journal	Application
Zi-Yang Zhang	30721695	Neuropharmacology	WB
Zi-Yang Zhang	31433808	PLoS Biol	WB

## Storage

Storage:

Store at -20°C. Stable for one year after shipment.

Storage Buffer:

PBS with 0.02% sodium azide and 50% glycerol pH 7.3.

Aliquoting is unnecessary for -20°C storage

\*\*\* 20ul sizes contain 0.1% BSA

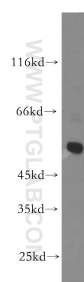
For technical support and original validation data for this product please contact:

T: 1 (888) 4PTGLAB (1-888-478-4522) (toll free in USA), or 1(312) 455-8498 (outside USA)

E: [proteintech@ptglab.com](mailto:proteintech@ptglab.com)  
W: [ptglab.com](http://ptglab.com)

This product is exclusively available under Proteintech Group brand and is not available to purchase from any other manufacturer.

## Selected Validation Data



MCF7 cells were subjected to SDS PAGE followed by western blot with 13145-1-AP (GLRA3 antibody) at dilution of 1:200 incubated at room temperature for 1.5 hours.