

For Research Use Only

GYG2 Polyclonal antibody

Catalog Number: 13150-1-AP



Basic Information

Catalog Number: 13150-1-AP	GenBank Accession Number: BC023152	Purification Method: Antigen affinity purification
Size: 150ul , Concentration: 180 ug/ml by Nanodrop and 133 ug/ml by Bradford method using BSA as the standard;	GeneID (NCBI): 8908	Recommended Dilutions: WB 1:500-1:1000
Source: Rabbit	UNIPROT ID: O15488	
Isotype: IgG	Full Name: glycogenin 2	
Immunogen Catalog Number: AG3765	Calculated MW: 501 aa, 55 kDa	
	Observed MW: 45 kDa, 66-70 kDa	

Applications

Tested Applications: WB, ELISA	Positive Controls: WB : L02 cells, HEK-293 cells, human liver tissue
Species Specificity: human	

Background Information

GYG2 belongs to the glycogenin family. Glycogenin is a self-glucosylating protein involved in the initiation phase of glycogen biosynthesis. Multiple alternatively spliced transcript variants encoding different isoforms have been identified, including the predominant band around 66 kDa and a light band around 45 kDa.

Storage

Storage:
Store at -20°C. Stable for one year after shipment.
Storage Buffer:
PBS with 0.02% sodium azide and 50% glycerol pH 7.3.
Aliquoting is unnecessary for -20°C storage

*** 20ul sizes contain 0.1% BSA

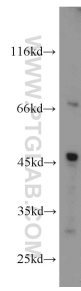
For technical support and original validation data for this product please contact:

T: 1 (888) 4PTGLAB (1-888-478-4522) (toll free in USA), or 1(312) 455-8498 (outside USA)

E: proteintech@ptglab.com
W: ptglab.com

This product is exclusively available under Proteintech Group brand and is not available to purchase from any other manufacturer.

Selected Validation Data



L02 cells were subjected to SDS PAGE followed by western blot with 13150-1-AP (GYG2 antibody) at dilution of 1:500 incubated at room temperature for 1.5 hours.