

For Research Use Only

RALBP1 Polyclonal antibody

Catalog Number: 13176-1-AP

1 Publications



Basic Information

Catalog Number:

13176-1-AP

Size:

150ul, Concentration: 550 ug/ml by Nanodrop and 400 ug/ml by Bradford method using BSA as the standard;

Source:

Rabbit

Isotype:

IgG

Immunogen Catalog Number:

AG3843

GenBank Accession Number:

BC013126

GeneID (NCBI):

10928

UNIPROT ID:

Q15311

Full Name:

ralA binding protein 1

Calculated MW:

655 aa, 76 kDa

Observed MW:

95 kDa

Purification Method:

Antigen affinity purification

Recommended Dilutions:

WB 1:1000-1:6000

IP 0.5-4.0 ug for 1.0-3.0 mg of total protein lysate

IHC 1:50-1:500

Applications

Tested Applications:

WB, IHC, IP, ELISA

Cited Applications:

WB, IHC

Species Specificity:

human

Cited Species:

human

Note-IHC: suggested antigen retrieval with TE buffer pH 9.0; (*) Alternatively, antigen retrieval may be performed with citrate buffer pH 6.0

Positive Controls:

WB : K-562 cells, HEK-293 cells, HepG2 cells, MCF-7 cells

IP : K-562 cells,

IHC : human stomach tissue,

Notable Publications

Author	Pubmed ID	Journal	Application
Jian Yang	28092822	Neoplasia	WB,IHC

Storage

Storage:

Store at -20°C. Stable for one year after shipment.

Storage Buffer:

PBS with 0.02% sodium azide and 50% glycerol pH 7.3.

Aliquoting is unnecessary for -20°C storage

*** 20ul sizes contain 0.1% BSA

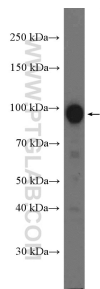
For technical support and original validation data for this product please contact:

T: 1 (888) 4PTGLAB (1-888-478-4522) (toll free in USA), or 1(312) 455-8498 (outside USA)

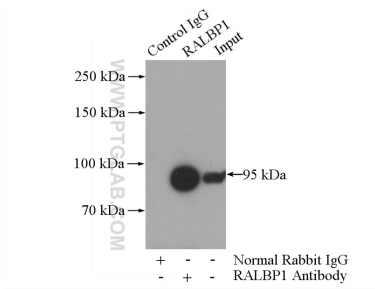
E: proteintech@ptglab.com
W: ptglab.com

This product is exclusively available under Proteintech Group brand and is not available to purchase from any other manufacturer.

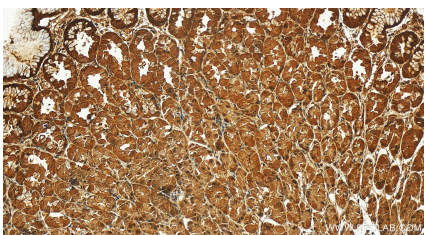
Selected Validation Data



K-562 cells were subjected to SDS PAGE followed by western blot with 13176-1-AP (RALBP1 Antibody) at dilution of 1:3000 incubated at room temperature for 1.5 hours.



IP result of anti-RALBP1 (IP:13176-1-AP, 4ug; Detection:13176-1-AP 1:800) with K-562 cells lysate 3600ug.



Immunohistochemical analysis of paraffin-embedded human stomach tissue slide using 13176-1-AP (RALBP1 antibody) at dilution of 1:200 (under 20x lens). Heat mediated antigen retrieval with Tris-EDTA buffer (pH 9.0).