

For Research Use Only

# CLEC2D Polyclonal antibody

Catalog Number: 13188-1-AP



## Basic Information

### Catalog Number:

13188-1-AP

### Size:

150ul , Concentration: 1000 ug/ml by Nanodrop;

### Source:

Rabbit

### Isotype:

IgG

### Immunogen Catalog Number:

AG3862

### GenBank Accession Number:

BC019883

### GeneID (NCBI):

29121

### UNIPROT ID:

Q9UHP7

### Full Name:

C-type lectin domain family 2, member D

### Calculated MW:

154 aa, 18 kDa

### Observed MW:

33 kDa

### Purification Method:

Antigen affinity purification

### Recommended Dilutions:

WB 1:500-1:1000

## Applications

### Tested Applications:

WB, ELISA

### Species Specificity:

human

### Positive Controls:

WB : Daudi cells, Jurkat cells, Saos-2 cells, U-87 MG cells

## Background Information

CLEC2D (C-type lectin domain family 2 member D), also known as LLT1 (lectin-like transcript 1) or OCIL (Osteoclast inhibitory lectin), is a single-pass type II membrane protein expressed by hematopoietic cells and osteoblasts (PMID: 21930700; 14753741). Its expression was found to be tightly correlated with activation on T cells, NK cells, B cells, and DCs (PMID: 21930700). CLEC2D is a ligand for the human NKR-P1A (CD161) receptor and their interaction differentially regulates NK- and T-cell functions (PMID: 16339513, 16339512). It inhibits the formation and function of osteoclasts and modulates the release of interferon-gamma by human NK cells (PMID: 14753741; 20415786).

## Storage

### Storage:

Store at -20°C. Stable for one year after shipment.

### Storage Buffer:

PBS with 0.02% sodium azide and 50% glycerol pH 7.3.

Aliquoting is unnecessary for -20°C storage

\*\*\* 20ul sizes contain 0.1% BSA

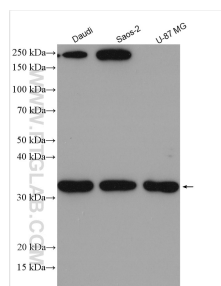
For technical support and original validation data for this product please contact:

T: 1 (888) 4PTGLAB (1-888-478-4522) (toll free in USA), or 1(312) 455-8498 (outside USA)

E: [proteintech@ptglab.com](mailto:proteintech@ptglab.com)  
W: [ptglab.com](http://ptglab.com)

This product is exclusively available under Proteintech Group brand and is not available to purchase from any other manufacturer.

## Selected Validation Data



Various lysates were subjected to SDS PAGE followed by western blot with 13188-1-AP (CLEC2D antibody) at dilution of 1:500 incubated at room temperature for 1.5 hours.