

For Research Use Only

DRG1 Polyclonal antibody

Catalog Number: 13190-1-AP

Featured Product

2 Publications



Basic Information

Catalog Number:

13190-1-AP

Size:

150ul, Concentration: 600 ug/ml by Nanodrop and 333 ug/ml by Bradford method using BSA as the standard;

Source:

Rabbit

Isotype:

IgG

Immunogen Catalog Number:

AG3866

GenBank Accession Number:

BC020803

GeneID (NCBI):

4733

UNIPROT ID:

Q9Y295

Full Name:

developmentally regulated GTP binding protein 1

Calculated MW:

367 aa, 41 kDa

Observed MW:

41 kDa

Purification Method:

Antigen affinity purification

Recommended Dilutions:

WB 1:2000-1:10000

IP 0.5-4.0 ug for 1.0-3.0 mg of total protein lysate

IHC 1:250-1:1000

IF/ICC 1:10-1:100

Applications

Tested Applications:

WB, IHC, IF/ICC, IP, ELISA

Cited Applications:

WB, IP

Species Specificity:

human, mouse, rat

Cited Species:

human

Note-IHC: suggested antigen retrieval with TE buffer pH 9.0; (*) Alternatively, antigen retrieval may be performed with citrate buffer pH 6.0

Positive Controls:

WB : HepG2 cells, PC-12 cells, K-562 cells

IP : K-562 cells,

IHC : human thyroid cancer tissue, mouse kidney tissue, rat kidney tissue, rat skeletal muscle tissue, human colon cancer tissue, human placenta tissue

IF/ICC : HepG2 cells,

Notable Publications

Author	Pubmed ID	Journal	Application
Suzana Markolovic	29915238	Nat Chem Biol	WB
Christian A E Westrip	39276770	Structure	WB,IP

Storage

Storage:

Store at -20°C. Stable for one year after shipment.

Storage Buffer:

PBS with 0.02% sodium azide and 50% glycerol pH 7.3.

Aliquoting is unnecessary for -20°C storage

*** 20ul sizes contain 0.1% BSA

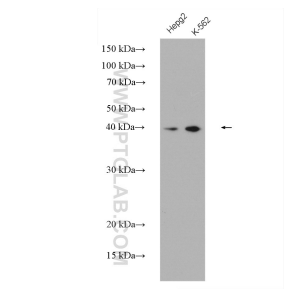
For technical support and original validation data for this product please contact:

T: 1 (888) 4PTGLAB (1-888-478-4522) (toll free in USA), or 1(312) 455-8498 (outside USA)

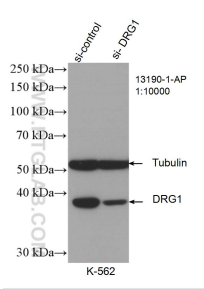
E: proteintech@ptglab.com
W: ptglab.com

This product is exclusively available under Proteintech Group brand and is not available to purchase from any other manufacturer.

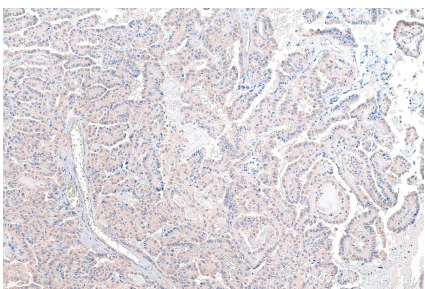
Selected Validation Data



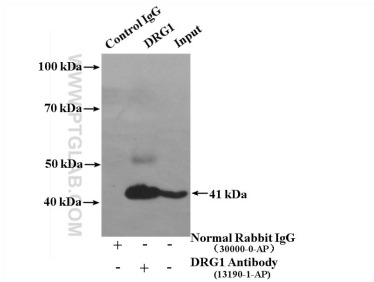
Various lysates were subjected to SDS PAGE followed by western blot with 13190-1-AP (DRG1 antibody) at dilution of 1:4000 incubated at room temperature for 1.5 hours.



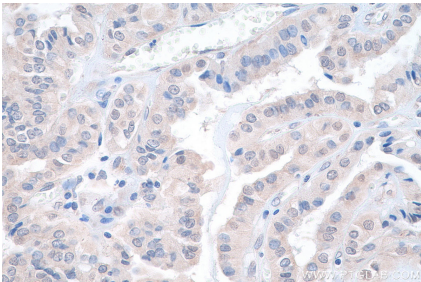
WB result of DRG1 antibody (13190-1-AP; 1:10000; incubated at room temperature for 1.5 hours) with sh-Control and sh-DRG1 transfected K-562 cells.



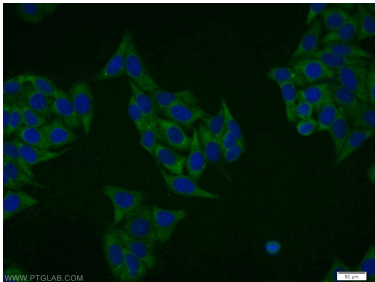
Immunohistochemical analysis of paraffin-embedded human thyroid cancer tissue slide using 13190-1-AP (DRG1 antibody) at dilution of 1:500 (under 10x lens). Heat mediated antigen retrieval with Tris-EDTA buffer (pH 9.0).



IP result of anti-DRG1 (IP:13190-1-AP, 4ug; Detection:13190-1-AP 1:600) with K-562 cells lysate 4400 ug.



Immunohistochemical analysis of paraffin-embedded human thyroid cancer tissue slide using 13190-1-AP (DRG1 antibody) at dilution of 1:500 (under 40x lens). Heat mediated antigen retrieval with Tris-EDTA buffer (pH 9.0).



Immunofluorescent analysis of HepG2 cells using 13190-1-AP (DRG1 antibody) at dilution of 1:25 and Alexa Fluor 488-conjugated Goat Anti-Rabbit IgG(H+L).