

For Research Use Only

PPM1B Polyclonal antibody

Catalog Number: 13193-1-AP

6 Publications



Basic Information

Catalog Number: 13193-1-AP	GenBank Accession Number: BC012002	Purification Method: Antigen affinity purification
Size: 150ul , Concentration: 700 ug/ml by Nanodrop;	GeneID (NCBI): 5495	Recommended Dilutions: WB 1:1000-1:4000
Source: Rabbit	UNIPROT ID: O75688	IHC 1:20-1:200
Isotype: IgG	Full Name: protein phosphatase 1B (formerly 2C), magnesium-dependent, beta isoform	IF/ICC 1:50-1:500
Immunogen Catalog Number: AG3871	Calculated MW: 479 aa, 53 kDa	
	Observed MW: 36, 53 kDa	

Applications

Tested Applications: WB, IHC, IF/ICC, ELISA	Positive Controls: WB : HeLa cells, MCF-7 cells
Cited Applications: WB, IF, IP, Cell treatment	IHC : human breast cancer tissue, human skeletal muscle tissue
Species Specificity: human, mouse	IF/ICC : MCF-7 cells,
Cited Species: human, mouse	
Note-IHC: suggested antigen retrieval with TE buffer pH 9.0; (*) Alternatively, antigen retrieval may be performed with citrate buffer pH 6.0	

Background Information

PPM1B is a member of the metal-dependent serine/threonine protein phosphatase (PPM) family with important regulatory functions in cellular signalling pathways(PMID: 18066953). PPM1B is also an important negative regulator of several stress signalling pathways and has been shown to negatively regulate the stress-activated p38 and JNK pathways by directly dephosphorylating upstream signalling proteins(PMID: 9824284). Moreover, PPM1B has also been shown to prevent cell death by negatively regulating necrotic cell death in a RIP3 dephosphorylation-dependent manner.(PMID: 25751141) PPM1B can be detected as the WM of 36-55 kDa.

Notable Publications

Author	Pubmed ID	Journal	Application
Xin Li	28361952	Nat Commun	IP
Paula Bollmann	33597873	Front Pharmacol	
Katyayane Neopane	36543129	Cell Rep	IP,IF,Cell treatment

Storage

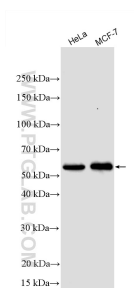
Storage:
Store at -20°C. Stable for one year after shipment.
Storage Buffer:
PBS with 0.02% sodium azide and 50% glycerol pH 7.3.
Aliquoting is unnecessary for -20°C storage

*** 20ul sizes contain 0.1% BSA

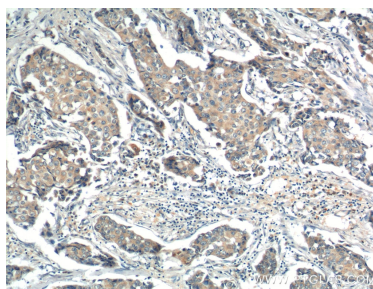
For technical support and original validation data for this product please contact:
T: 1 (888) 4PTGLAB (1-888-478-4522) (toll free in USA), or 1(312) 455-8498 (outside USA)
E: proteintech@ptglab.com
W: ptglab.com

This product is exclusively available under Proteintech Group brand and is not available to purchase from any other manufacturer.

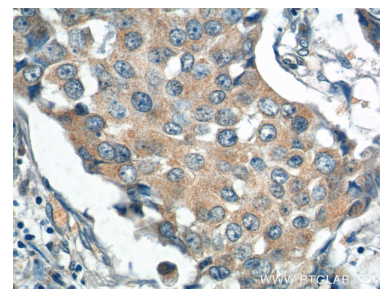
Selected Validation Data



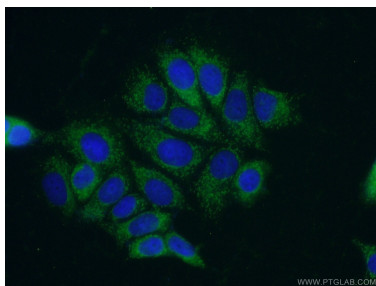
Various lysates were subjected to SDS PAGE followed by western blot with 13193-1-AP (PPM1B antibody) at dilution of 1:2000 incubated at room temperature for 1.5 hours.



Immunohistochemical analysis of paraffin-embedded human breast cancer tissue slide using 13193-1-AP (PPM1B Antibody) at dilution of 1:200 (under 10x lens).



Immunohistochemical analysis of paraffin-embedded human breast cancer tissue slide using 13193-1-AP (PPM1B Antibody) at dilution of 1:200 (under 40x lens).



Immunofluorescent analysis of (-20°C Ethanol) fixed MCF-7 cells using 13193-1-AP (PPM1B antibody) at dilution of 1:50 and Alexa Fluor 488-conjugated AffiniPure Goat Anti-Rabbit IgG(H+L).