

For Research Use Only

ISCA2 Polyclonal antibody

Catalog Number: 13200-1-AP

2 Publications



Basic Information

Catalog Number:

13200-1-AP

Size:

150ul, Concentration: 700 ug/ml by Nanodrop and 333 ug/ml by Bradford method using BSA as the standard;

Source:

Rabbit

Isotype:

IgG

Immunogen Catalog Number:

AG3941

GenBank Accession Number:

BC032893

GeneID (NCBI):

122961

UNIPROT ID:

Q86U28

Full Name:

iron-sulfur cluster assembly 2 homolog (S. cerevisiae)

Calculated MW:

154 aa, 16 kDa

Observed MW:

16 kDa

Purification Method:

Antigen affinity purification

Recommended Dilutions:

WB 1:500-1:1000

IHC 1:50-1:500

IF/ICC 1:50-1:500

Applications

Tested Applications:

WB, IHC, IF/ICC, ELISA

Cited Applications:

WB, IHC

Species Specificity:

human

Cited Species:

human, mouse

Note-IHC: suggested antigen retrieval with TE buffer pH 9.0; (*) Alternatively, antigen retrieval may be performed with citrate buffer pH 6.0

Positive Controls:

WB : A431 cells,

IHC : human liver cancer tissue, human breast cancer tissue

IF/ICC : A431 cells,

Notable Publications

Author	Pubmed ID	Journal	Application
Ling Yang	36385109	Sci Rep	IHC
Yang Zhu	37578635	Neurosci Bull	WB

Storage

Storage:

Store at -20°C. Stable for one year after shipment.

Storage Buffer:

PBS with 0.02% sodium azide and 50% glycerol pH 7.3.

Aliquoting is unnecessary for -20°C storage

*** 20ul sizes contain 0.1% BSA

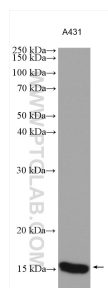
For technical support and original validation data for this product please contact:

T: 1 (888) 4PTGLAB (1-888-478-4522) (toll free in USA), or 1(312) 455-8498 (outside USA)

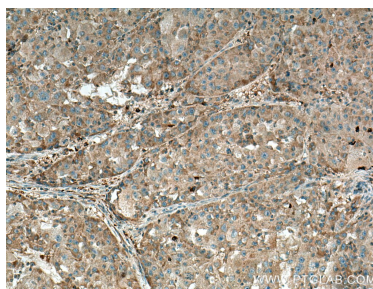
E: proteintech@ptglab.com
W: ptglab.com

This product is exclusively available under Proteintech Group brand and is not available to purchase from any other manufacturer.

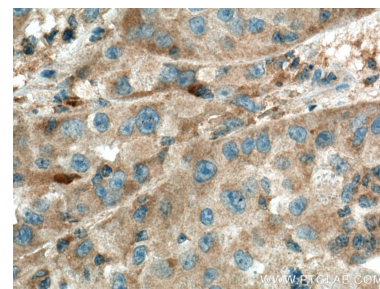
Selected Validation Data



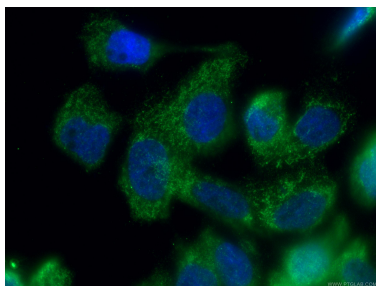
A431 cells were subjected to SDS PAGE followed by western blot with 13200-1-AP (ISCA2 antibody) at dilution of 1:600 incubated at room temperature for 1.5 hours.



Immunohistochemical analysis of paraffin-embedded human liver cancer tissue slide using 13200-1-AP (ISCA2 antibody) at dilution of 1:200 (under 10x lens). Heat mediated antigen retrieval with Tris-EDTA buffer (pH 9.0).



Immunohistochemical analysis of paraffin-embedded human liver cancer tissue slide using 13200-1-AP (ISCA2 antibody) at dilution of 1:200 (under 40x lens). Heat mediated antigen retrieval with Tris-EDTA buffer (pH 9.0).



Immunofluorescent analysis of (4% PFA) fixed A431 cells using 13200-1-AP (ISCA2 antibody), at dilution of 1:200 and CoraLite® 488-Conjugated Goat Anti-Rabbit IgG(H+L).