

For Research Use Only

ARH Polyclonal antibody

Catalog Number: 13213-1-AP

Featured Product

2 Publications



Basic Information

Catalog Number:

13213-1-AP

Size:

150ul, Concentration: 500 ug/ml by Nanodrop and 300 ug/ml by Bradford method using BSA as the standard;

Source:

Rabbit

Isotype:

IgG

Immunogen Catalog Number:

AG4006

GenBank Accession Number:

BC029770

GeneID (NCBI):

26119

UNIPROT ID:

Q5SW96

Full Name:

low density lipoprotein receptor adaptor protein 1

Calculated MW:

308 aa, 34 kDa

Observed MW:

34 kDa

Purification Method:

Antigen affinity purification

Recommended Dilutions:

WB 1:2000-1:10000

IP 0.5-4.0 ug for 1.0-3.0 mg of total protein lysate

IHC 1:50-1:500

Applications

Tested Applications:

WB, IHC, IP, ELISA

Cited Applications:

WB

Species Specificity:

human, mouse

Cited Species:

mouse

Note-IHC: suggested antigen retrieval with TE buffer pH 9.0; (*) Alternatively, antigen retrieval may be performed with citrate buffer pH 6.0

Positive Controls:

WB : HEK-293 cells, HeLa cells, K-562 cells

IP : HeLa cells,

IHC : human liver cancer tissue, mouse kidney tissue

Notable Publications

Author	Pubmed ID	Journal	Application
Colin T Stomberski	36288700	Cell Rep	WB
Yu-Feng Zhang	38771546	Cell Biol Toxicol	WB

Storage

Storage:

Store at -20°C. Stable for one year after shipment.

Storage Buffer:

PBS with 0.02% sodium azide and 50% glycerol, pH7.3

Aliquoting is unnecessary for -20°C storage

*** 20ul sizes contain 0.1% BSA

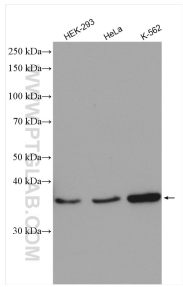
For technical support and original validation data for this product please contact:

T: 1 (888) 4PTGLAB (1-888-478-4522) (toll free in USA), or 1(312) 455-8498 (outside USA)

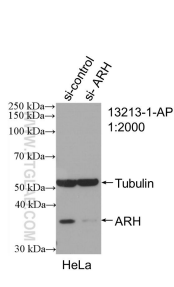
E: proteintech@ptglab.com
W: ptglab.com

This product is exclusively available under Proteintech Group brand and is not available to purchase from any other manufacturer.

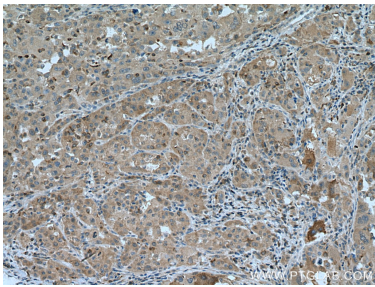
Selected Validation Data



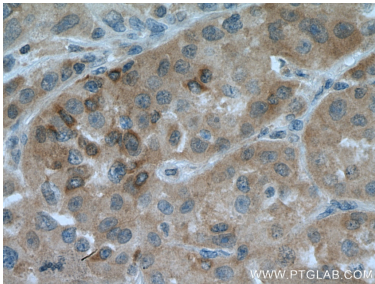
Various lysates were subjected to SDS PAGE followed by western blot with 13213-1-AP (ARH antibody) at dilution of 1:5000 incubated at room temperature for 1.5 hours.



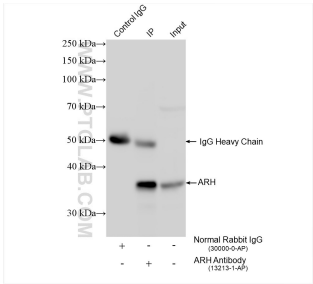
WB result of ARH antibody (13213-1-AP; 1:2000; incubated at room temperature for 1.5 hours) with sh-Control and sh-ARH transfected HeLa cells.



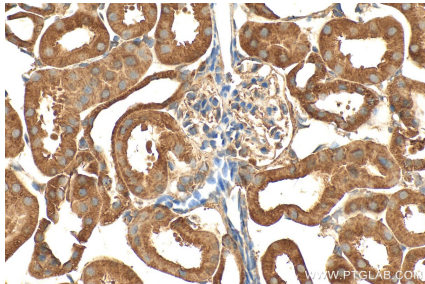
Immunohistochemical analysis of paraffin-embedded human liver cancer tissue slide using 13213-1-AP (ARH antibody) at dilution of 1:200 (under 10x lens). Heat mediated antigen retrieval with Tris-EDTA buffer (pH 9.0).



Immunohistochemical analysis of paraffin-embedded human liver cancer tissue slide using 13213-1-AP (ARH antibody) at dilution of 1:200 (under 40x lens). Heat mediated antigen retrieval with Tris-EDTA buffer (pH 9.0).



IP result of anti-ARH (IP:13213-1-AP, 4ug; Detection:13213-1-AP 1:5000) with HeLa cells lysate 1200 ug.



Immunohistochemical analysis of paraffin-embedded mouse kidney tissue slide using 13213-1-AP (ARH antibody) at dilution of 1:200 (under 40x lens). Heat mediated antigen retrieval with Tris-EDTA buffer (pH 9.0).