

For Research Use Only

MYL4 Polyclonal antibody

Catalog Number: 13229-1-AP



Basic Information

Catalog Number: 13229-1-AP	GenBank Accession Number: BC030228	Purification Method: Antigen affinity purification
Size: 150ul , Concentration: 350 ug/ml by Nanodrop and 200 ug/ml by Bradford method using BSA as the standard;	GeneID (NCBI): 4635	Recommended Dilutions: WB 1:500-1:2000
Source: Rabbit	UNIPROT ID: P12829	
Isotype: IgG	Full Name: myosin, light chain 4, alkali; atrial, embryonic	
Immunogen Catalog Number: AG4031	Calculated MW: 197 aa, 22 kDa	
	Observed MW: 22-30 kDa	

Applications

Tested Applications: WB, ELISA	Positive Controls: WB : human liver tissue,
Species Specificity: human, mouse, rat	

Background Information

Myosin light-chain 4 (MYL4) encodes an essential myosin light chain that is expressed in embryonic whole heart and skeletal muscle. It is specifically expressed in human atria after birth. MYL4 is essential for atrial electrical, functional, and structural integrity, and MYL4 dysfunction can produce severe inherited atrial cardiomyopathy.

Storage

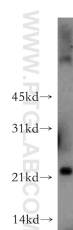
Storage:
Store at -20°C. Stable for one year after shipment.
Storage Buffer:
PBS with 0.02% sodium azide and 50% glycerol pH 7.3.
Aliquoting is unnecessary for -20°C storage

*** 20ul sizes contain 0.1% BSA

For technical support and original validation data for this product please contact:
T: 1 (888) 4PTGLAB (1-888-478-4522) (toll free in USA), or 1(312) 455-8498 (outside USA)
E: proteintech@ptglab.com
W: ptglab.com

This product is exclusively available under Proteintech Group brand and is not available to purchase from any other manufacturer.

Selected Validation Data



human liver tissue were subjected to SDS PAGE followed by western blot with 13229-1-AP (MYL4 antibody) at dilution of 1:400 incubated at room temperature for 1.5 hours.