

For Research Use Only

SIGLEC5 Polyclonal antibody

Catalog Number: 13230-1-AP **1 Publications**



Basic Information

Catalog Number: 13230-1-AP	GenBank Accession Number: BC029896	Purification Method: Antigen affinity purification
Size: 150ul , Concentration: 850 µg/ml by Nanodrop and 400 µg/ml by Bradford method using BSA as the standard;	GeneID (NCBI): 8778	Recommended Dilutions: WB 1:500-1:2000
Source: Rabbit	Full Name: sialic acid binding Ig-like lectin 5	
Isotype: IgG	Calculated MW: 551 aa, 61 kDa	
Immunogen Catalog Number: AG4101	Observed MW: 70 kDa	

Applications

Tested Applications: WB, ELISA	Positive Controls: WB : THP-1 cells,
Cited Applications: IHC	
Species Specificity: human	
Cited Species: human	

Background Information

Notable Publications

Author	Pubmed ID	Journal	Application
Ju-Yi Li	28900239	Sci Rep	IHC

Storage

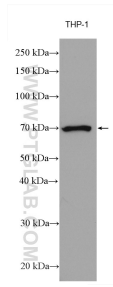
Storage:
Store at -20°C. Stable for one year after shipment.
Storage Buffer:
PBS with 0.02% sodium azide and 50% glycerol pH 7.3.
Aliquoting is unnecessary for -20°C storage

*** 20ul sizes contain 0.1% BSA

For technical support and original validation data for this product please contact:
T: 1 (888) 4PTGLAB (1-888-478-4522) (toll free in USA), or 1(312) 455-8498 (outside USA)
E: proteintech@ptglab.com
W: ptglab.com

This product is exclusively available under Proteintech Group brand and is not available to purchase from any other manufacturer.

Selected Validation Data



THP-1 cells were subjected to SDS PAGE followed by western blot with 13230-1-AP (SIGLEC5 antibody) at dilution of 1:1000 incubated at room temperature for 1.5 hours.