

For Research Use Only

PI4KB Polyclonal antibody

Catalog Number: 13247-1-AP

Featured Product

11 Publications



Basic Information

Catalog Number:

13247-1-AP

Size:

150ul, Concentration: 500 ug/ml by Nanodrop and 300 ug/ml by Bradford method using BSA as the standard;

Source:

Rabbit

Isotype:

IgG

Immunogen Catalog Number:

AG3989

GenBank Accession Number:

BC040300

GeneID (NCBI):

5298

UNIPROT ID:

Q9UBF8

Full Name:

phosphatidylinositol 4-kinase, catalytic, beta

Calculated MW:

801 aa, 90 kDa

Observed MW:

100 kDa

Purification Method:

Antigen affinity purification

Recommended Dilutions:

WB 1:500-1:1000

IP 0.5-4.0 ug for 1.0-3.0 mg of total protein lysate

IHC 1:50-1:500

IF/ICC 1:200-1:800

Applications

Tested Applications:

WB, IHC, IF/ICC, IP, ELISA

Cited Applications:

WB, IF

Species Specificity:

human, mouse, rat

Cited Species:

human, mouse, rat

Note-IHC: suggested antigen retrieval with TE buffer pH 9.0; (*) Alternatively, antigen retrieval may be performed with citrate buffer pH 6.0

Positive Controls:

WB : K-562 cells, NIH-3T3 cells (RNAi)

IP : K-562 cells,

IHC : human liver tissue,

IF/ICC : C6 cells,

Background Information

PI4KB(phosphatidylinositol 4-kinase beta) is also named as PIK4CB, NPIK, PI4K92 and belongs to the PI3/PI4-kinase family. It may regulate Golgi disintegration/reorganization during mitosis, possibly via its phosphorylation and involved in Golgi-to-plasma membrane trafficking. PI4KB is a type III enzyme that is sensitive to wortmannin(PMID:9020160). This protein has 3 isoforms produced by alternative splicing.

Notable Publications

Author	Pubmed ID	Journal	Application
Ying Gao	36280710	Cell Res	WB
Tao Wang	28985237	PLoS Pathog	WB
Yueyao Zhu	36169639	J Cell Biol	WB

Storage

Storage:

Store at -20°C. Stable for one year after shipment.

Storage Buffer:

PBS with 0.02% sodium azide and 50% glycerol pH 7.3.

Aliquoting is unnecessary for -20°C storage

*** 20ul sizes contain 0.1% BSA

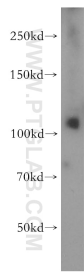
For technical support and original validation data for this product please contact:

T: 1 (888) 4PTGLAB (1-888-478-4522) (toll free in USA), or 1(312) 455-8498 (outside USA)

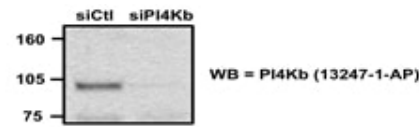
E: proteintech@ptglab.com
W: ptglab.com

This product is exclusively available under Proteintech Group brand and is not available to purchase from any other manufacturer.

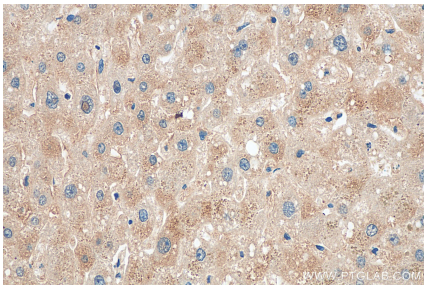
Selected Validation Data



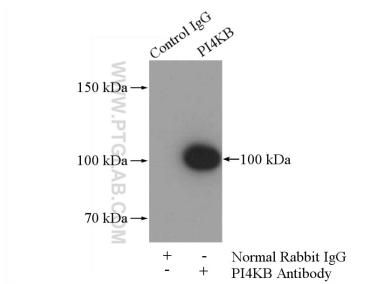
K-562 cells were subjected to SDS PAGE followed by western blot with 13247-1-AP (PI4KB antibody) at dilution of 1:300 incubated at room temperature for 1.5 hours.



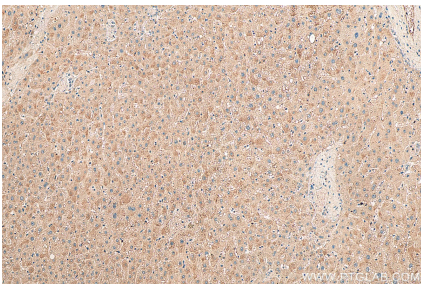
WB result of anti- PI4Kb (13247-1-AP) with NIH-3T3 cells (RNAi).



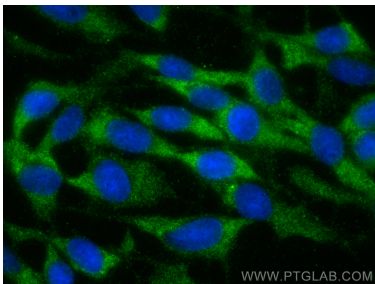
Immunohistochemical analysis of paraffin-embedded human liver tissue slide using 13247-1-AP (PI4KB antibody) at dilution of 1:200 (under 40x lens). Heat mediated antigen retrieval with Tris-EDTA buffer (pH 9.0).



IP result of anti-PI4KB (IP:13247-1-AP, 4ug; Detection:13247-1-AP 1:300) with K-562 cells lysate 3600ug.



Immunohistochemical analysis of paraffin-embedded human liver tissue slide using 13247-1-AP (PI4KB antibody) at dilution of 1:200 (under 10x lens). Heat mediated antigen retrieval with Tris-EDTA buffer (pH 9.0).



Immunofluorescent analysis of (-20°C Ethanol) fixed C6 cells using PI4KB antibody (13247-1-AP) at dilution of 1:400 and CoraLite®488-Conjugated Goat Anti-Rabbit IgG(H+L).