

For Research Use Only

# CPEB1 Polyclonal antibody

Catalog Number: 13274-1-AP

Featured Product

17 Publications



## Basic Information

### Catalog Number:

13274-1-AP

### Size:

150ul, Concentration: 350 ug/ml by Nanodrop;

### Source:

Rabbit

### Isotype:

IgG

### Immunogen Catalog Number:

AG3994

### GenBank Accession Number:

BC035348

### GeneID (NCBI):

64506

### UNIPROT ID:

Q9BZB8

### Full Name:

cytoplasmic polyadenylation element binding protein 1

### Calculated MW:

486 aa, 54 kDa

### Observed MW:

60-70kDa

### Purification Method:

Antigen affinity purification

### Recommended Dilutions:

WB 1:1000-1:4000

IHC 1:50-1:200

IF/ICC 1:50-1:500

## Applications

### Tested Applications:

WB, IHC, IF/ICC, ELISA

### Cited Applications:

WB, IHC, IF, IP, RIP

### Species Specificity:

human, mouse, rat

### Cited Species:

human, mouse, rat, asterina pectinifera

**Note-IHC: suggested antigen retrieval with TE buffer pH 9.0; (\*) Alternatively, antigen retrieval may be performed with citrate buffer pH 6.0**

### Positive Controls:

WB : HEK-293T cells, HeLa cells, NIH/3T3 cells

IHC : human liver cancer tissue, human breast cancer tissue, human colon cancer tissue

IF/ICC : HeLa cells,

## Background Information

CPEB1, also named as CEBP, CPEB and CPE-BP1, contains two RRM (RNA recognition motif) domains and belongs to the RRM CPEB family. It is a sequence-specific RNA-binding protein that regulates mRNA cytoplasmic polyadenylation and translation initiation during oocyte maturation, early development and at postsynapse sites of neurons. CPEB1 regulated translation is a key process involved in INS signaling. This is a rabbit polyclonal antibody raised against residues near the C terminus of human CPEB1.

## Notable Publications

Author	Pubmed ID	Journal	Application
Valeria Giangarrà	26398195	PLoS One	WB
Gelei Xiao	34678444	Brain Res Bull	WB,IF
Christopher R Neil	34613784	Mol Biol Cell	WB

## Storage

### Storage:

Store at -20°C. Stable for one year after shipment.

### Storage Buffer:

PBS with 0.02% sodium azide and 50% glycerol pH 7.3.

Aliquoting is unnecessary for -20°C storage

\*\*\* 20ul sizes contain 0.1% BSA

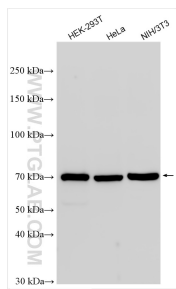
For technical support and original validation data for this product please contact:

T: 1 (888) 4PTGLAB (1-888-478-4522) (toll free in USA), or 1(312) 455-8498 (outside USA)

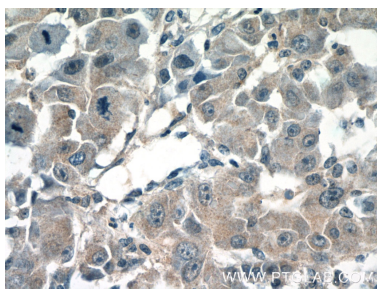
E: proteintech@ptglab.com  
W: ptglab.com

This product is exclusively available under Proteintech Group brand and is not available to purchase from any other manufacturer.

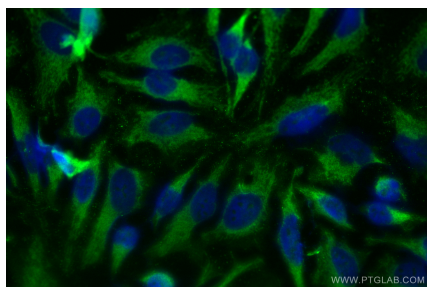
## Selected Validation Data



Various lysates were subjected to SDS PAGE followed by western blot with 13274-1-AP (CPEB1 antibody) at dilution of 1:2000 incubated at room temperature for 1.5 hours.



Immunohistochemical analysis of paraffin-embedded human liver cancer tissue slide using 13274-1-AP (CPEB1 Antibody) at dilution of 1:50 (under 40x Lens).



Immunofluorescent analysis of (-20°C Ethanol) fixed HeLa cells using CPEB1 antibody (13274-1-AP) at dilution of 1:200 and CoraLite®488-Conjugated Goat Anti-Rabbit IgG(H+L).