

For Research Use Only

Cyclin A1 Polyclonal antibody

Catalog Number: 13295-1-AP

31 Publications



Basic Information

Catalog Number:

13295-1-AP

Size:

150ul, Concentration: 187 ug/ml by Bradford method using BSA as the standard;

Source:

Rabbit

Isotype:

IgG

Immunogen Catalog Number:

AG4005

GenBank Accession Number:

BC036346

GeneID (NCBI):

8900

UNIPROT ID:

P78396

Full Name:

cyclin A1

Calculated MW:

464 aa, 52 kDa

Observed MW:

52 kDa

Purification Method:

Antigen affinity purification

Recommended Dilutions:

WB: 1:500-1:1000

IHC: 1:500-1:2000

Applications

Tested Applications:

WB, IHC, ELISA

Cited Applications:

WB

Species Specificity:

human, mouse, rat

Cited Species:

human, mouse, rat

Positive Controls:

WB: mouse testis tissue, rat testis tissue

IHC: mouse testis tissue,

Note-IHC: suggested antigen retrieval with TE buffer pH 9.0; (*) Alternatively, antigen retrieval may be performed with citrate buffer pH 6.0

Background Information

CCNA1 belongs to the highly conserved cyclin family, whose members are characterized by a dramatic periodicity in protein abundance through the cell cycle. CCNA1 binds both CDK2 and CDC2 kinases, which give two distinct kinase activities, one appearing in S phase, the other in G2, and thus regulate separate functions in cell cycle. CCNA1 was found to bind to important cell cycle regulators, such as Rb family proteins, transcription factor E2F-1, and the p21 family proteins. In general, the expression of CCNA1 is tissue-specific and high CCNA1 expression is limited to testis; besides, lower levels of CCNA1 expression are also observed in other human cell lines and in healthy brain. Currently, CCNA1 expression has been illustrated to be downregulated in various tumors, including head and neck squamous-cell cancer (HNSCC) and nasopharyngeal carcinoma; and the promoter of the CCNA1 gene is found to be frequently methylated in colon cancer and HNSCC.

Notable Publications

Author	Pubmed ID	Journal	Application
Jing Wang	26409448	Tumour Biol	WB
Yuan Zhao	27731405	Sci Rep	WB
Yun Liu	30535498	Int J Mol Med	WB

Storage

Storage:

Store at -20°C. Stable for one year after shipment.

Storage Buffer:

PBS with 0.02% sodium azide and 50% glycerol, pH7.3

Aliquoting is unnecessary for -20°C storage

*** 20ul sizes contain 0.1% BSA

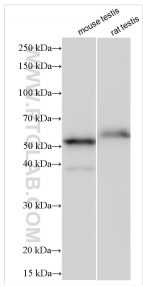
For technical support and original validation data for this product please contact:

T: 1 (888) 4PTGLAB (1-888-478-4522) (toll free in USA), or 1(312) 455-8498 (outside USA)

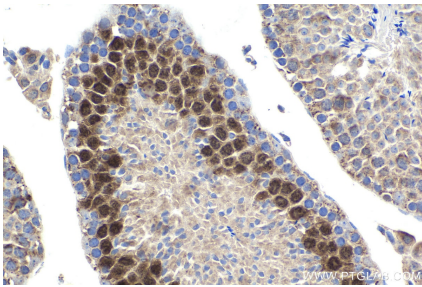
E: proteintech@ptglab.com
W: ptglab.com

This product is exclusively available under Proteintech Group brand and is not available to purchase from any other manufacturer.

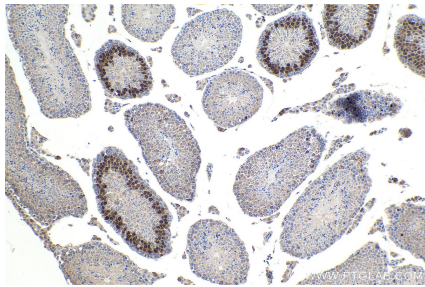
Selected Validation Data



Various lysates were subjected to SDS PAGE followed by western blot with 13295-1-AP (Cyclin A1 antibody) at dilution of 1:800 incubated at room temperature for 1.5 hours.



Immunohistochemical analysis of paraffin-embedded mouse testis tissue slide using 13295-1-AP (Cyclin A1 antibody) at dilution of 1:1000 (under 40x lens). Heat mediated antigen retrieval with Tris-EDTA buffer (pH 9.0).



Immunohistochemical analysis of paraffin-embedded mouse testis tissue slide using 13295-1-AP (Cyclin A1 antibody) at dilution of 1:1000 (under 10x lens). Heat mediated antigen retrieval with Tris-EDTA buffer (pH 9.0).