

For Research Use Only

# CSDE1 Polyclonal antibody

Catalog Number: 13319-1-AP

Featured Product

6 Publications



## Basic Information

### Catalog Number:

13319-1-AP

### Size:

150ul, Concentration: 500 ug/ml by Nanodrop and 147 ug/ml by Bradford method using BSA as the standard;

### Source:

Rabbit

### Isotype:

IgG

### Immunogen Catalog Number:

AG4173

### GenBank Accession Number:

BC032446

### GeneID (NCBI):

7812

### UNIPROT ID:

O75534

### Full Name:

cold shock domain containing E1, RNA-binding

### Calculated MW:

798 aa, 89 kDa

### Observed MW:

89 kDa

### Purification Method:

Antigen affinity purification

### Recommended Dilutions:

WB 1:2000-1:14000

IHC 1:50-1:500

IF/ICC 1:50-1:500

## Applications

### Tested Applications:

WB, IHC, IF/ICC, ELISA

### Cited Applications:

WB

### Species Specificity:

human, mouse

### Cited Species:

human, mouse

### Positive Controls:

WB : A431 cells, HEK-293 cells, HeLa cells

IHC : human liver cancer tissue,

IF/ICC : HeLa cells,

**Note-IHC: suggested antigen retrieval with TE buffer pH 9.0; (\*) Alternatively, antigen retrieval may be performed with citrate buffer pH 6.0**

## Background Information

CSDE1 (Cold shock domain-containing protein E1), also known as UNR (upstream of N-ras), is an RNA-binding protein involved in the regulation of messenger RNA stability and internal initiation of translation. It is required for internal initiation of translation of human rhinovirus RNA. UNR may be involved in translationally coupled mRNA turnover. Reduced expression of UNR impairs proliferation and differentiation of erythroid blasts. Recent study found that UNR acts as a positive or negative regulator of cell death, depending on the cell type, suggesting manipulation of UNR level may constitute a specific approach to sensitize cancer cells to anticancer treatments.

## Notable Publications

Author	Pubmed ID	Journal	Application
Joel I Perez-Perri	30352994	Nat Commun	WB
Joel I Perez-Perri	33208978	Nat Protoc	WB
Nedal Taha	36016420	Viruses	WB

## Storage

### Storage:

Store at -20°C. Stable for one year after shipment.

### Storage Buffer:

PBS with 0.02% sodium azide and 50% glycerol pH 7.3.

Aliquoting is unnecessary for -20°C storage

\*\*\* 20ul sizes contain 0.1% BSA

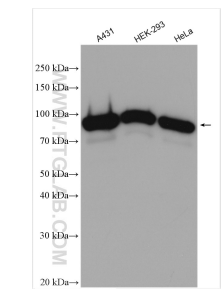
For technical support and original validation data for this product please contact:

T: 1 (888) 4PTGLAB (1-888-478-4522) (toll free in USA), or 1(312) 455-8498 (outside USA)

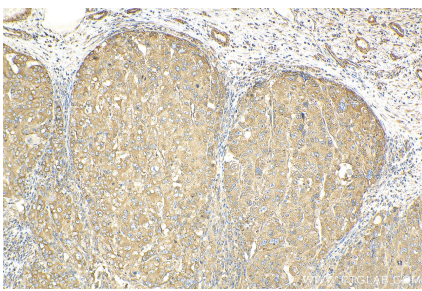
E: proteintech@ptglab.com  
W: ptglab.com

This product is exclusively available under Proteintech Group brand and is not available to purchase from any other manufacturer.

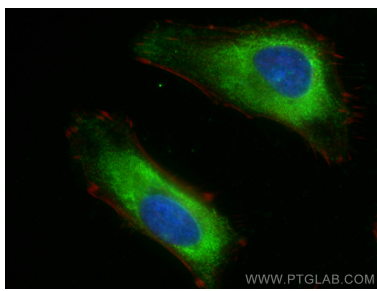
Selected Validation Data



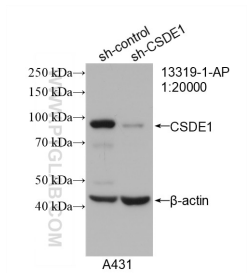
Various lysates were subjected to SDS PAGE followed by western blot with 13319-1-AP (CSDE1 antibody) at dilution of 1:7000 incubated at room temperature for 1.5 hours.



Immunohistochemical analysis of paraffin-embedded human liver cancer tissue slide using 13319-1-AP (CSDE1 antibody) at dilution of 1:200 (under 10x lens). Heat mediated antigen retrieval with Tris-EDTA buffer (pH 9.0).



Immunofluorescent analysis of (-20°C Ethanol) fixed HeLa cells using CSDE1 antibody (13319-1-AP) at dilution of 1:200 and CoraLite®488-Conjugated Goat Anti-Rabbit IgG(H+L), CL594-Phalloidin (red).



WB result of CSDE1 antibody (13319-1-AP; 1:20000; incubated at room temperature for 1.5 hours) with sh-Control and sh-CSDE1 transfected A431 cells.