

For Research Use Only

CD300LF Polyclonal antibody

Catalog Number: 13334-1-AP **1 Publications**



Basic Information

Catalog Number: 13334-1-AP	GenBank Accession Number: BC028199	Purification Method: Antigen affinity purification
Size: 150ul , Concentration: 650 µg/ml by Nanodrop and 300 µg/ml by Bradford method using BSA as the standard;	GeneID (NCBI): 146722	Recommended Dilutions: WB 1:500-1:1000 IP 0.5-4.0 ug for IP and 1:500-1:3000
Source: Rabbit	Full Name: CD300 molecule-like family member f	
Isotype: IgG	Calculated MW: 290 aa, 32 kDa	
Immunogen Catalog Number: AG4150	Observed MW: 30-34 kDa	

Applications

Tested Applications: IP, WB, ELISA	Positive Controls: WB : Jurkat cells, U-937 cells
Cited Applications: WB	IP : K-562 cells,
Species Specificity: human	
Cited Species: mouse	

Background Information

CD300LF, also known as CLM1 (CMRF35-like molecule 1), is a member of the CD300 protein family. Members of this family are cell surface glycoproteins with a single IgV-like extracellular domain, and are involved in the regulation of immune response. CD300LF is an inhibitory receptor that has been shown to inhibit various inflammatory processes in myeloid cells, such as macrophages and mast cells.

Notable Publications

Author	Pubmed ID	Journal	Application
Dmitry N Grigoryev	26285698	BMC Pulm Med	WB

Storage

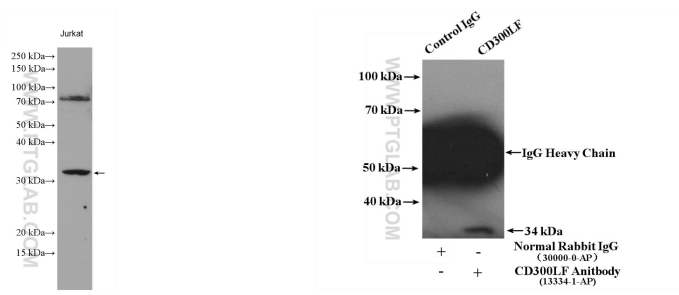
Storage:
Store at -20°C. Stable for one year after shipment.
Storage Buffer:
PBS with 0.02% sodium azide and 50% glycerol pH 7.3.
Aliquoting is unnecessary for -20°C storage

*** 20ul sizes contain 0.1% BSA

For technical support and original validation data for this product please contact:
T: 1 (888) 4PTGLAB (1-888-478-4522) (toll free in USA), or 1(312) 455-8498 (outside USA) E: proteintech@ptglab.com W: ptglab.com

This product is exclusively available under Proteintech Group brand and is not available to purchase from any other manufacturer.

Selected Validation Data



Jurkat cells were subjected to SDS PAGE followed by western blot with 13334-1-AP (CD300LF antibody) at dilution of 1:500 incubated at room temperature for 1.5 hours.

IP Result of anti-CD300LF (IP:13334-1-AP, 4ug; Detection:13334-1-AP 1:1500) with K-562 cells lysate 4000ug.