

For Research Use Only

PPP3CB Polyclonal antibody

Catalog Number: 13340-1-AP

Featured Product

9 Publications



Basic Information

Catalog Number:

13340-1-AP

Size:

150ul, Concentration: 500 ug/ml by Nanodrop and 300 ug/ml by Bradford method using BSA as the standard;

Source:

Rabbit

Isotype:

IgG

Immunogen Catalog Number:

AG4163

GenBank Accession Number:

BC028049

GeneID (NCBI):

5532

UNIPROT ID:

P16298

Full Name:

protein phosphatase 3 (formerly 2B), catalytic subunit, beta isoform

Calculated MW:

525 aa, 59 kDa

Observed MW:

59 kDa

Purification Method:

Antigen affinity purification

Recommended Dilutions:

WB 1:1000-1:4000

IP 0.5-4.0 ug for 1.0-3.0 mg of total protein lysate

IHC 1:50-1:500

IF/ICC 1:50-1:500

Applications

Tested Applications:

WB, IHC, IF/ICC, IP, ELISA

Cited Applications:

WB, IF, IP

Species Specificity:

human, mouse, rat

Cited Species:

human, mouse

Note-IHC: suggested antigen retrieval with TE buffer pH 9.0; (*) Alternatively, antigen retrieval may be performed with citrate buffer pH 6.0

Positive Controls:

WB: mouse brain tissue, human heart tissue, HEK-293 cells, rat brain tissue

IP: mouse brain tissue,

IHC: mouse kidney tissue, mouse brain tissue

IF/ICC: U-251 cells,

Notable Publications

| Author | Pubmed ID | Journal | Application |
|------------------|-----------|-------------------|-------------|
| Takahiro Goshima | 31484966 | Sci Rep | |
| Jialiang Liu | 34799729 | Cell Death Differ | IP |
| Haojie Jin | 28583823 | Gastroenterology | WB |

Storage

Storage:

Store at -20°C. Stable for one year after shipment.

Storage Buffer:

PBS with 0.02% sodium azide and 50% glycerol pH 7.3.

Aliquoting is unnecessary for -20°C storage

*** 20ul sizes contain 0.1% BSA

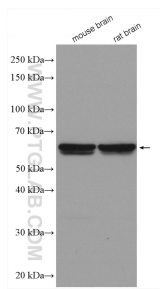
For technical support and original validation data for this product please contact:

T: 1 (888) 4PTGLAB (1-888-478-4522) (toll free in USA), or 1(312) 455-8498 (outside USA)

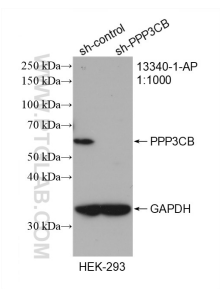
E: proteintech@ptglab.com
W: ptglab.com

This product is exclusively available under Proteintech Group brand and is not available to purchase from any other manufacturer.

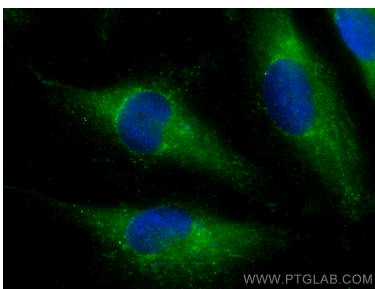
Selected Validation Data



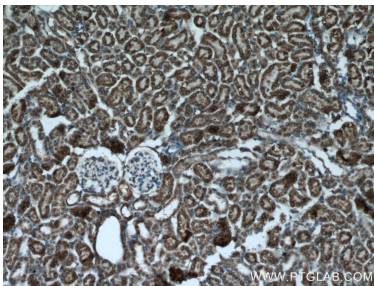
Various lysates were subjected to SDS PAGE followed by western blot with 13340-1-AP (PPP3CB antibody) at dilution of 1:2000 incubated at room temperature for 1.5 hours.



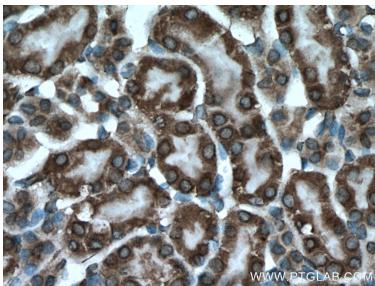
WB result of PPP3CB antibody (13340-1-AP; 1:1000; incubated at room temperature for 1.5 hours) with sh-Control and sh-PPP3CB transfected HEK-293 cells.



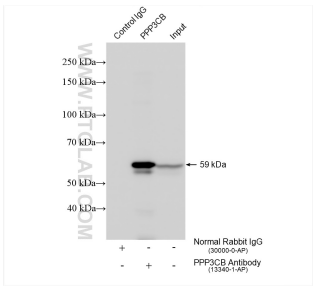
Immunofluorescent analysis of (-20°C Methanol) fixed U-251 cells using PPP3CB antibody (13340-1-AP) at dilution of 1:200 and CoraLite®488-Conjugated AffiniPure Goat Anti-Rabbit IgG(H+L).



Immunohistochemical analysis of paraffin-embedded mouse kidney tissue slide using 13340-1-AP (PPP3CB antibody) at dilution of 1:200 (under 10x lens). Heat mediated antigen retrieval with Tris-EDTA buffer (pH 9.0).



Immunohistochemical analysis of paraffin-embedded mouse kidney tissue slide using 13340-1-AP (PPP3CB antibody) at dilution of 1:200 (under 40x lens). Heat mediated antigen retrieval with Tris-EDTA buffer (pH 9.0).



IP result of anti-PPP3CB (IP:13340-1-AP, 4ug; Detection:13340-1-AP 1:2000) with mouse brain tissue lysate 1680 ug.