

For Research Use Only

SCFD2 Polyclonal antibody

Catalog Number: 13375-1-AP



Basic Information

Catalog Number:

13375-1-AP

Size:

150ul , Concentration: 400 ug/ml by Nanodrop;

Source:

Rabbit

Isotype:

IgG

Immunogen Catalog Number:

AG4197

GenBank Accession Number:

BC032453

GeneID (NCBI):

152579

UNIPROT ID:

Q8WU76

Full Name:

sec1 family domain containing 2

Calculated MW:

684 aa, 75 kDa

Observed MW:

70-75 kDa

Purification Method:

Antigen affinity purification

Recommended Dilutions:

WB: 1:500-1:2000

IP: 0.5-4.0 ug for 1.0-3.0 mg of total protein lysate

IHC: 1:50-1:500

Applications

Tested Applications:

WB, IHC, IP, ELISA

Species Specificity:

human, mouse, rat

Note-IHC: suggested antigen retrieval with *TE buffer pH 9.0*; (*) Alternatively, antigen retrieval may be performed with *citrate buffer pH 6.0*

Positive Controls:

WB : COLO 320 cells, HepG2 cells, Jurkat cells, K-562 cells

IP : COLO 320 cells,

IHC : human colon cancer tissue, human colon tissue

Storage

Storage:

Store at -20°C. Stable for one year after shipment.

Storage Buffer:

PBS with 0.02% sodium azide and 50% glycerol, pH7.3

Aliquoting is unnecessary for -20°C storage

*** 20ul sizes contain 0.1% BSA

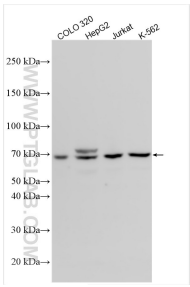
For technical support and original validation data for this product please contact:

T: 1 (888) 4PTGLAB (1-888-478-4522) (toll free in USA), or 1(312) 455-8498 (outside USA)

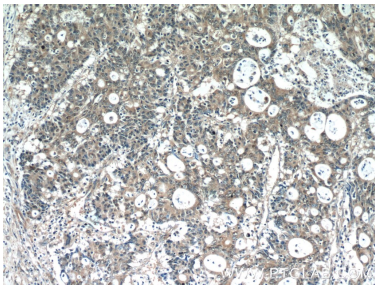
E: proteintech@ptglab.com
W: ptglab.com

This product is exclusively available under Proteintech Group brand and is not available to purchase from any other manufacturer.

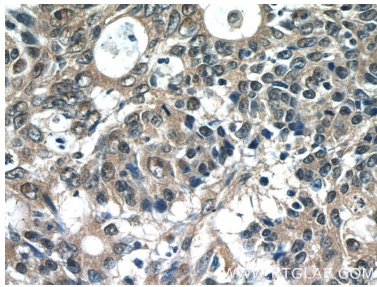
Selected Validation Data



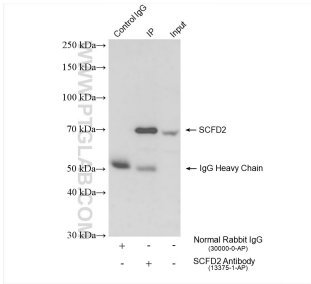
Various lysates were subjected to SDS PAGE followed by western blot with 13375-1-AP (SCFD2 antibody) at dilution of 1:1000 incubated at room temperature for 1.5 hours.



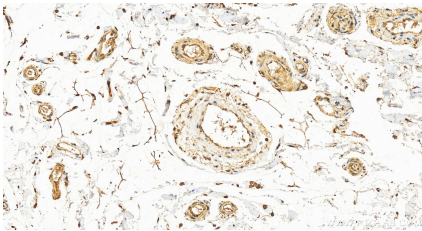
Immunohistochemical analysis of paraffin-embedded human colon cancer tissue slide using 13375-1-AP (SCFD2 Antibody) at dilution of 1:50 (under 10x lens).



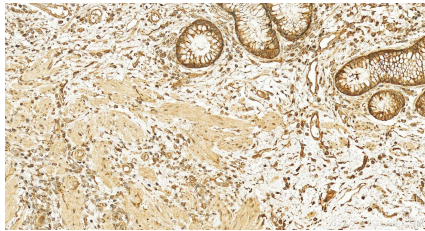
Immunohistochemical analysis of paraffin-embedded human colon cancer tissue slide using 13375-1-AP (SCFD2 Antibody) at dilution of 1:50 (under 40x lens).



IP result of anti-SCFD2 (IP:13375-1-AP, 4ug; Detection:13375-1-AP 1:600) with COLO 320 cells lysate 1680 ug.



Immunohistochemical analysis of paraffin-embedded human normal colon slide using 13375-1-AP (SCFD2 antibody) at dilution of 1:200 (under 20x lens). Heat mediated antigen retrieval with Tris-EDTA buffer (pH 9.0).



Immunohistochemical analysis of paraffin-embedded human colon cancer tissue slide using 13375-1-AP (SCFD2 antibody) at dilution of 1:200 (under 20x lens). Heat mediated antigen retrieval with Tris-EDTA buffer (pH 9.0).