

For Research Use Only

Siglec-9 Polyclonal antibody

Catalog Number: 13377-1-AP

2 Publications



Basic Information

Catalog Number: 13377-1-AP	GenBank Accession Number: BC035365	Purification Method: Antigen affinity purification
Size: 150ul , Concentration: 400 ug/ml by Nanodrop and 360 ug/ml by Bradford method using BSA as the standard;	GeneID (NCBI): 27180	Recommended Dilutions: WB 1:300-1:1000
Source: Rabbit	UNIPROT ID: Q9Y336	IHC 1:50-1:500
Isotype: IgG	Full Name: sialic acid binding Ig-like lectin 9	IF-P 1:50-1:500
Immunogen Catalog Number: AG4201	Calculated MW: 463 aa, 50 kDa	
	Observed MW: 55-60 kDa	

Applications

Tested Applications: WB, IHC, IF-P, ELISA	Positive Controls:
Cited Applications: WB, IHC, IF	WB : HL-60 cells, U-937 cells, mouse skeletal muscle tissue, A375 cells
Species Specificity: human, mouse	IHC : human liver cancer tissue,
Cited Species: human	IF-P : human tonsillitis tissue,

Note-IHC: suggested antigen retrieval with TE buffer pH 9.0; (*) Alternatively, antigen retrieval may be performed with citrate buffer pH 6.0

Background Information

Sialic acid binding Ig-like lectin 9 (Siglec-9), also known as CD329, is a member of the Siglec family of glycan-recognition proteins. Siglec-9 is a type-I transmembrane protein consisting of an N-terminal extracellular region that contains an N-terminal V-set domain and two C2-set domains, a transmembrane region, and an intracellular domain with an immunoreceptor tyrosine-based inhibitory motif (ITIM) and an ITIM-like motif (PMID: 10801862). It is expressed quite broadly among human blood leukocytes, including monocytes, neutrophils, B cells, NK cells, and minor subsets of T cells (PMID: 32322597). Siglec-9 functions as an inhibitory immune checkpoint and can be targeted to enhance therapeutic antitumor immunity (PMID: 34155121; 37460871).

Notable Publications

Author	Pubmed ID	Journal	Application
Rebecca Garnham	38448753	Commun Biol	WB,IHC,IF
Yan Mei	37460871	Nat Cancer	IF

Storage

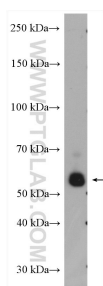
Storage:
Store at -20°C. Stable for one year after shipment.
Storage Buffer:
PBS with 0.02% sodium azide and 50% glycerol pH 7.3.
Aliquoting is unnecessary for -20°C storage

*** 20ul sizes contain 0.1% BSA

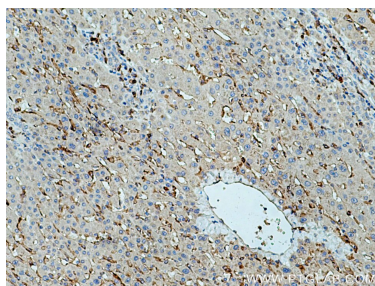
For technical support and original validation data for this product please contact:
T: 1 (888) 4PTGLAB (1-888-478-4522) (toll free in USA), or 1(312) 455-8498 (outside USA)
E: proteintech@ptglab.com
W: ptglab.com

This product is exclusively available under Proteintech Group brand and is not available to purchase from any other manufacturer.

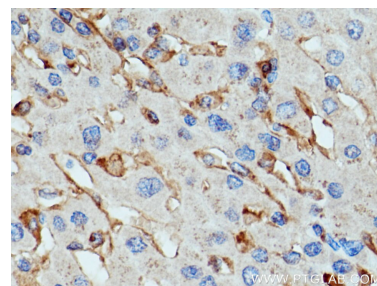
Selected Validation Data



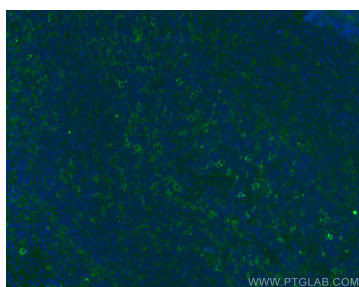
HL-60 cells were subjected to SDS PAGE followed by western blot with 13377-1-AP (Siglec-9 antibody) at dilution of 1:600 incubated at room temperature for 1.5 hours.



Immunohistochemical analysis of paraffin-embedded human liver cancer tissue slide using 13377-1-AP (Siglec-9 antibody) at dilution of 1:200 (under 10x lens). Heat mediated antigen retrieval with Tris-EDTA buffer (pH 9.0).



Immunohistochemical analysis of paraffin-embedded human liver cancer tissue slide using 13377-1-AP (Siglec-9 antibody) at dilution of 1:200 (under 40x lens). Heat mediated antigen retrieval with Tris-EDTA buffer (pH 9.0).



Immunofluorescent analysis of (4% PFA) fixed paraffin-embedded human tonsillitis tissue using Siglec-9 antibody (13377-1-AP) at dilution of 1:200 and Coralite®488-Conjugated Goat Anti-Rabbit IgG(H+L) (SA00013-2). Heat mediated antigen retrieval with Tris-EDTA buffer (pH 9.0).