

For Research Use Only

# CHD9 Polyclonal antibody

Catalog Number: 13402-1-AP

Featured Product

4 Publications



## Basic Information

### Catalog Number:

13402-1-AP

### Size:

150ul, Concentration: 700 ug/ml by Nanodrop and 500 ug/ml by Bradford method using BSA as the standard;

### Source:

Rabbit

### Isotype:

IgG

### Immunogen Catalog Number:

AG4245

### GenBank Accession Number:

BC033770

### GeneID (NCBI):

80205

### UNIPROT ID:

Q3L8U1

### Full Name:

chromodomain helicase DNA binding protein 9

### Calculated MW:

2897 aa, 326 kDa

### Observed MW:

330 kDa

### Purification Method:

Antigen affinity purification

### Recommended Dilutions:

WB 1:1000-1:4000

IHC 1:20-1:200

IF/ICC 1:50-1:500

## Applications

### Tested Applications:

WB, IHC, IF/ICC, ELISA

### Cited Applications:

WB, IHC, ChIP

### Species Specificity:

human

### Cited Species:

human

**Note-IHC: suggested antigen retrieval with TE buffer pH 9.0; (\*) Alternatively, antigen retrieval may be performed with citrate buffer pH 6.0**

### Positive Controls:

WB : SGC-7901 cells, K-562 cells

IHC : human kidney tissue,

IF/ICC : HeLa cells,

## Notable Publications

Author	Pubmed ID	Journal	Application
Tomoyo Kawakubo-Yasukochi	28981169	Mol Carcinog	WB, IHC
Li Xu	30043858	Braz J Med Biol Res	IHC
Bo Guan	31949752	Int J Clin Exp Pathol	IHC

## Storage

### Storage:

Store at -20°C. Stable for one year after shipment.

### Storage Buffer:

PBS with 0.02% sodium azide and 50% glycerol pH 7.3.

Aliquoting is unnecessary for -20°C storage

\*\*\* 20ul sizes contain 0.1% BSA

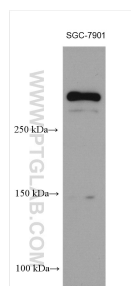
For technical support and original validation data for this product please contact:

T: 1 (888) 4PTGLAB (1-888-478-4522) (toll free in USA), or 1(312) 455-8498 (outside USA)

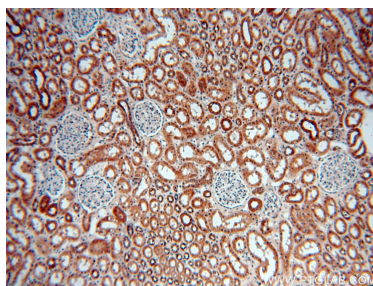
E: [proteintech@ptglab.com](mailto:proteintech@ptglab.com)  
W: [ptglab.com](http://ptglab.com)

This product is exclusively available under Proteintech Group brand and is not available to purchase from any other manufacturer.

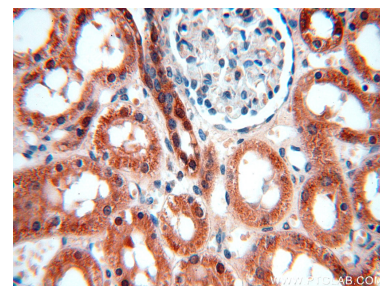
## Selected Validation Data



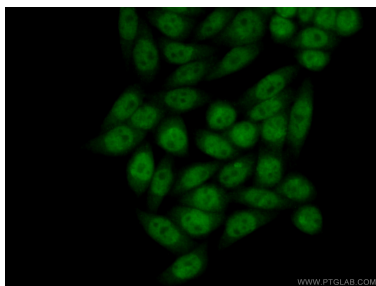
SGC-7901 cells were subjected to SDS PAGE followed by western blot with 13402-1-AP (CHD9 antibody) at dilution of 1:2000 incubated at room temperature for 1.5 hours.



Immunohistochemical analysis of paraffin-embedded human kidney using 13402-1-AP (CHD9 antibody) at dilution of 1:100 (under 10x lens).



Immunohistochemical analysis of paraffin-embedded human kidney using 13402-1-AP (CHD9 antibody) at dilution of 1:100 (under 40x lens).



Immunofluorescent analysis of (4% PFA) fixed HeLa cells using 13402-1-AP (CHD9 antibody) at dilution of 1:50 and Alexa Fluor 488-conjugated AffiniPure Goat Anti-Rabbit IgG(H+L).