

For Research Use Only

RAB27B Polyclonal antibody

Catalog Number: 13412-1-AP

Featured Product

45 Publications



Basic Information

Catalog Number:

13412-1-AP

Size:

150ul, Concentration: 750 ug/ml by Nanodrop;

Source:

Rabbit

Isotype:

IgG

Immunogen Catalog Number:

AG4064

GenBank Accession Number:

BC027474

GeneID (NCBI):

5874

UNIPROT ID:

O00194

Full Name:

RAB27B, member RAS oncogene family

Calculated MW:

218 aa, 25 kDa

Observed MW:

25-30 kDa

Purification Method:

Antigen affinity purification

Recommended Dilutions:

WB 1:500-1:2000

IHC 1:250-1:1000

IF/ICC 1:50-1:500

Applications

Tested Applications:

WB, IHC, IF/ICC, ELISA

Cited Applications:

WB, IHC, IF

Species Specificity:

human, mouse, rat

Cited Species:

human, mouse, rat, canine

Note-IHC: suggested antigen retrieval with TE buffer pH 9.0; (*) Alternatively, antigen retrieval may be performed with citrate buffer pH 6.0

Positive Controls:

WB: rat spleen tissue, A375 cells, DU 145 cells, MCF-7 cells, PC-3 cells

IHC: rat stomach tissue, human breast cancer tissue, human colon cancer tissue, human liver cancer tissue, human oesophagus cancer tissue, human pancreas cancer tissue, human prostate cancer tissue, human testis tissue, mouse stomach tissue

IF/ICC: U-87 MG cells, HeLa cells

Background Information

The Rab27 GTPase subfamily consists of two closely related homologs, Rab27a and Rab27b. Northern blot analysis revealed that Rab27b is expressed significantly only in testis, in which the predominant transcript was 1.4 kb in size. An 8-kb mRNA of unknown origin was detected in many tissues. Rab27b is associated with tubulovesicle membranes in the parietal cell and Rab27b may play a role in stimulation-associated membrane recruitment and gastric acid secretion. Rab27b is recently reported as a marker for breast cancer progression. It regulates invasive growth and metastasis in ER-positive breast cancer cell lines, and increased expression is associated with poor prognosis in humans.

Notable Publications

| Author | Pubmed ID | Journal | Application |
|---------------|-----------|-----------------------------------|-------------|
| Jian Guo | 32989094 | J Immunol | WB |
| Xueqiang Peng | 32949647 | Biochim Biophys Acta Mol Cell Res | WB |
| Hiroshi Gomi | 28914590 | J Histochem Cytochem | WB,IHC |

Storage

Storage:

Store at -20°C. Stable for one year after shipment.

Storage Buffer:

PBS with 0.02% sodium azide and 50% glycerol pH 7.3.

Aliquoting is unnecessary for -20°C storage

*** 20ul sizes contain 0.1% BSA

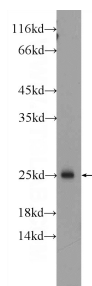
For technical support and original validation data for this product please contact:

T: 1 (888) 4PTGLAB (1-888-478-4522) (toll free in USA), or 1(312) 455-8498 (outside USA)

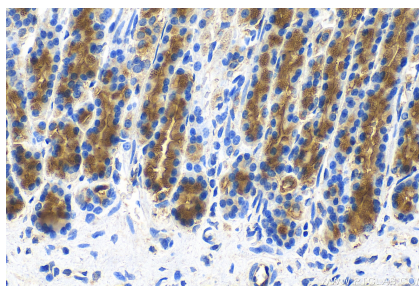
E: proteintech@ptglab.com
W: ptglab.com

This product is exclusively available under Proteintech Group brand and is not available to purchase from any other manufacturer.

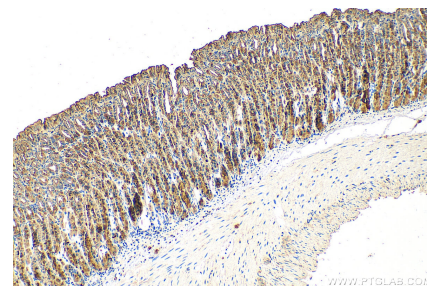
Selected Validation Data



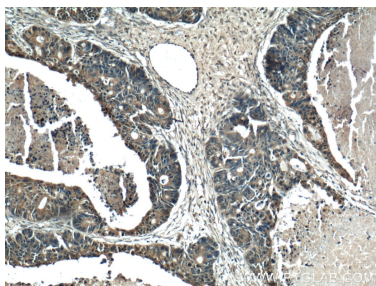
rat spleen tissue were subjected to SDS PAGE followed by western blot with 13412-1-AP (RAB27B Antibody) at dilution of 1:1000 incubated at room temperature for 1.5 hours.



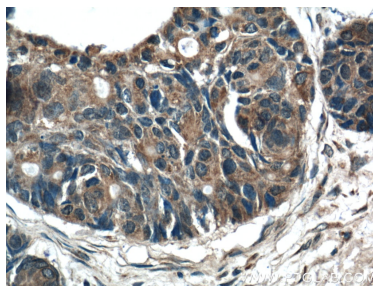
Immunohistochemical analysis of paraffin-embedded rat stomach tissue slide using 13412-1-AP (RAB27B antibody) at dilution of 1:500 (under 40x lens). Heat mediated antigen retrieval with Tris-EDTA buffer (pH 9.0).



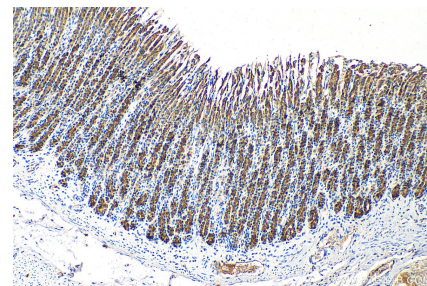
Immunohistochemical analysis of paraffin-embedded mouse stomach tissue slide using 13412-1-AP (RAB27B antibody) at dilution of 1:500 (under 10x lens). Heat mediated antigen retrieval with Tris-EDTA buffer (pH 9.0).



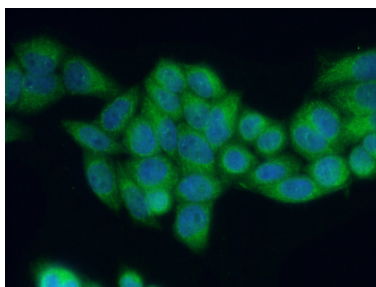
Immunohistochemical analysis of paraffin-embedded human pancreas cancer tissue slide using 13412-1-AP (RAB27B Antibody) at dilution of 1:200 (under 10x lens).



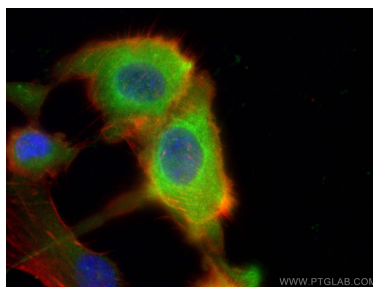
Immunohistochemical analysis of paraffin-embedded human pancreas cancer tissue slide using 13412-1-AP (RAB27B Antibody) at dilution of 1:200 (under 40x lens).



Immunohistochemical analysis of paraffin-embedded rat stomach tissue slide using 13412-1-AP (RAB27B antibody) at dilution of 1:500 (under 10x lens). Heat mediated antigen retrieval with Tris-EDTA buffer (pH 9.0).



Immunofluorescent analysis of (4% PFA) fixed HeLa cells using 13412-1-AP (RAB27B antibody) at dilution of 1:50 and Alexa Fluor 488-conjugated AffiniPure Goat Anti-Rabbit IgG(H+L).



Immunofluorescent analysis of (-20°C Ethanol) fixed U-87 MG cells using RAB27B antibody (13412-1-AP) at dilution of 1:200 and CoraLite® 488-Conjugated AffiniPure Goat Anti-Rabbit IgG(H+L), CL594-phalloidin (red).