

For Research Use Only

# GSK3A Polyclonal antibody

Catalog Number: 13419-1-AP

6 Publications



## Basic Information

<b>Catalog Number:</b> 13419-1-AP	<b>GenBank Accession Number:</b> BC027984	<b>Purification Method:</b> Antigen affinity purification
<b>Size:</b> 150ul , Concentration: 1000 ug/ml by Nanodrop;	<b>GeneID (NCBI):</b> 2931	<b>Recommended Dilutions:</b> WB 1:2000-1:10000
<b>Source:</b> Rabbit	<b>UNIPROT ID:</b> P49840	<b>IHC 1:50-1:500</b>
<b>Isotype:</b> IgG	<b>Full Name:</b> glycogen synthase kinase 3 alpha	<b>IF/ICC 1:200-1:800</b>
<b>Immunogen Catalog Number:</b> AG4168	<b>Calculated MW:</b> 483 aa, 51 kDa	
	<b>Observed MW:</b> 51 kDa	

## Applications

<b>Tested Applications:</b> WB, IHC, IF/ICC, ELISA	<b>Positive Controls:</b>
<b>Cited Applications:</b> WB	<b>WB :</b> HeLa cells, human plasma, mouse liver tissue, MCF-7 cells, PC-3 cells
<b>Species Specificity:</b> human, mouse, rat	<b>IHC :</b> human prostate cancer tissue, human lung cancer tissue, human ovary tumor tissue
<b>Cited Species:</b> human, mouse	<b>IF/ICC :</b> HeLa cells,
<b>Note-IHC: suggested antigen retrieval with TE buffer pH 9.0; (*) Alternatively, antigen retrieval may be performed with citrate buffer pH 6.0</b>	

## Background Information

GSK3A (glycogen synthase kinase 3 alpha), one of the two functional isoforms encoded by the GSK3 gene, is a serine/threonine protein kinase that is involved in cell-cycle progression, differentiation, and apoptosis (PMID: 27049759). GSK3A acts as a tumor suppressor and has important roles in acute myeloid leukemia (AML), prostate cancer, and pancreatic cancer (PMID: 22326953, 22539113, 23547054). GSK3A is also known to interact with beta-amyloid and tau, proteins that aggregate in areas of the neuronal system as part of the pathology of neurodegenerative diseases such as Alzheimer's disease (PMID: 19782073).

## Notable Publications

Author	Pubmed ID	Journal	Application
Yuyu Yang	34381779	Front Cell Dev Biol	WB
Nan Song	28722108	J Cell Physiol	WB
Dong-Xue Ding	35281731	iScience	WB

## Storage

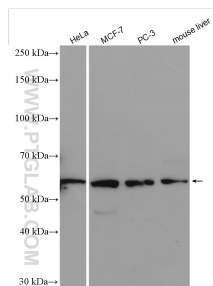
**Storage:**  
Store at -20°C. Stable for one year after shipment.  
**Storage Buffer:**  
PBS with 0.02% sodium azide and 50% glycerol pH 7.3.  
**Aliquoting is unnecessary for -20°C storage**

\*\*\* 20ul sizes contain 0.1% BSA

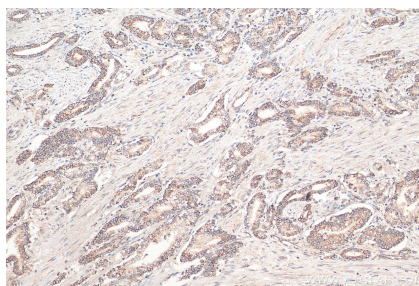
For technical support and original validation data for this product please contact:  
T: 1 (888) 4PTGLAB (1-888-478-4522) (toll free in USA), or 1(312) 455-8498 (outside USA)  
E: proteintech@ptglab.com  
W: ptglab.com

This product is exclusively available under Proteintech Group brand and is not available to purchase from any other manufacturer.

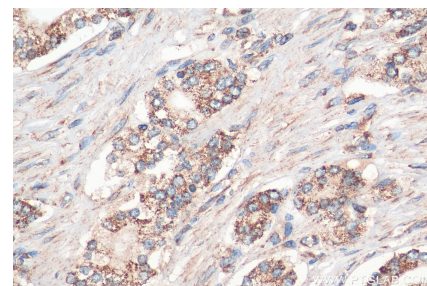
## Selected Validation Data



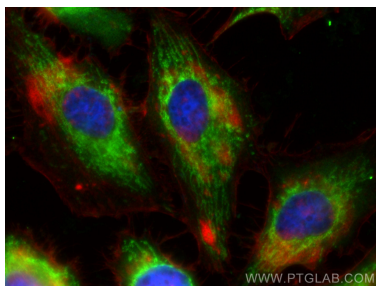
Various lysates were subjected to SDS PAGE followed by western blot with 13419-1-AP (GSK3A antibody) at dilution of 1:5000 incubated at room temperature for 1.5 hours.



Immunohistochemical analysis of paraffin-embedded human prostate cancer tissue slide using 13419-1-AP (GSK3A antibody) at dilution of 1:200 (under 10x lens). Heat mediated antigen retrieval with Tris-EDTA buffer (pH 9.0).



Immunohistochemical analysis of paraffin-embedded human prostate cancer tissue slide using 13419-1-AP (GSK3A antibody) at dilution of 1:200 (under 40x lens). Heat mediated antigen retrieval with Tris-EDTA buffer (pH 9.0).



Immunofluorescent analysis of (-20°C Ethanol) fixed HeLa cells using GSK3A antibody (13419-1-AP) at dilution of 1:400 and CoraLite®488-Conjugated AffiniPure Goat Anti-Rabbit IgG(H+L) (SA00013-2).