

For Research Use Only

E2F8 Polyclonal antibody

Catalog Number: 13425-1-AP

5 Publications



Basic Information

Catalog Number:

13425-1-AP

Size:

150ul, Concentration: 500 ug/ml by Nanodrop and 287 ug/ml by Bradford method using BSA as the standard;

Source:

Rabbit

Isotype:

IgG

Immunogen Catalog Number:

AG4216

GenBank Accession Number:

BC028244

GeneID (NCBI):

79733

UNIPROT ID:

A0AVK6

Full Name:

E2F transcription factor 8

Calculated MW:

867 aa, 94 kDa

Observed MW:

105 kDa

Purification Method:

Antigen affinity purification

Recommended Dilutions:

WB 1:500-1:1000

IP 0.5-4.0 ug for 1.0-3.0 mg of total protein lysate

Applications

Tested Applications:

WB, IP, ELISA

Cited Applications:

WB, ChIP

Species Specificity:

human

Cited Species:

human, goat

Positive Controls:

WB : HeLa cells, HEK-293 cells

IP : HEK-293 cells,

Background Information

E2F8 is one E2F transcription factor that is essential for orchestrating expression of genes required for cell cycle progression, proliferation, apoptosis and differentiation. E2F8 shows a high degree of resemblance to E2F7 and shares the unique structure of E2F7 by having two distinct domains exhibiting a high degree of similarity to the DNA-binding domain of the E2F family. Together with E2F7, they possess two DNA-binding domains that are predicted to interact with each other. E2F8 binds consensus E2F sites in a DP-independent manner and represses transcription of E2F-regulated promoters. Ectopic expression of E2F8 inhibits cellular proliferation. The calculated molecular weight of E2F8 is 94 kDa, but modified E2F8 is about 105 kDa. (PMID: 15897886)

Notable Publications

Author	Pubmed ID	Journal	Application
Xiangling Feng	35088582	Adv Sci (Weinh)	WB, ChIP
Yinan Chen	29341117	Int J Cancer	WB
Zhimin Wang	38388551	Cell Death Discov	WB

Storage

Storage:

Store at -20°C. Stable for one year after shipment.

Storage Buffer:

PBS with 0.02% sodium azide and 50% glycerol pH 7.3.

Aliquoting is unnecessary for -20°C storage

*** 20ul sizes contain 0.1% BSA

For technical support and original validation data for this product please contact:

T: 1 (888) 4PTGLAB (1-888-478-4522) (toll free in USA), or 1(312) 455-8498 (outside USA)

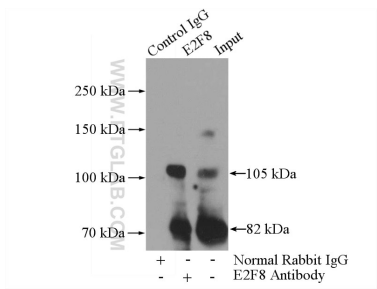
E: proteintech@ptglab.com
W: ptglab.com

This product is exclusively available under Proteintech Group brand and is not available to purchase from any other manufacturer.

Selected Validation Data



HeLa cells were subjected to SDS PAGE followed by western blot with 13425-1-AP (E2F8 antibody) at dilution of 1:1000 incubated at room temperature for 1.5 hours.



IP result of anti-E2F8 (IP:13425-1-AP, 4ug; Detection:13425-1-AP 1:500) with HEK-293 cells lysate 2800ug.