

For Research Use Only

CSRP1 Polyclonal antibody

Catalog Number: 13432-1-AP **1 Publications**



Basic Information

Catalog Number: 13432-1-AP	GenBank Accession Number: BC032493	Purification Method: Antigen affinity purification
Size: 150ul , Concentration: 1000 µg/ml by Nanodrop and 580 µg/ml by Bradford method using BSA as the standard;	GeneID (NCBI): 1465	Recommended Dilutions: WB 1:500-1:1000 IP 0.5-4.0 ug for IP and 1:200-1:1000 for WB
Source: Rabbit	Full Name: cysteine and glycine-rich protein 1	Calculated MW: 193 aa, 21 kDa
Isotype: IgG	Observed MW: 21 kDa	IHC 1:20-1:200
Immunogen Catalog Number: AG4236		

Applications

Tested Applications: IHC, IP, WB, ELISA	Positive Controls:
Cited Applications: WB	WB: human stomach tissue,
Species Specificity: human, mouse, rat	IP: mouse stomach tissue,
Cited Species: rat	IHC: human cervical cancer tissue, human lung cancer tissue
Note-IHC: suggested antigen retrieval with TE buffer pH 9.0; (*) Alternatively, antigen retrieval may be performed with citrate buffer pH 6.0	

Background Information

Notable Publications

Author	Pubmed ID	Journal	Application
Hui Ren	28983603	Mol. Med Rep	WB

Storage

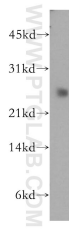
Storage:
Store at -20°C. Stable for one year after shipment.
Storage Buffer:
PBS with 0.02% sodium azide and 50% glycerol pH 7.3.
Aliquoting is unnecessary for -20°C storage

*** 20ul sizes contain 0.1% BSA

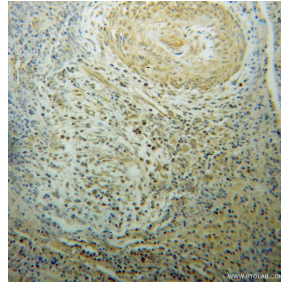
For technical support and original validation data for this product please contact:
T: 1 (888) 4PTGLAB (1-888-478-4522) (toll free in USA), or 1(312) 455-8498 (outside USA) E: proteintech@ptglab.com W: ptglab.com

This product is exclusively available under Proteintech Group brand and is not available to purchase from any other manufacturer.

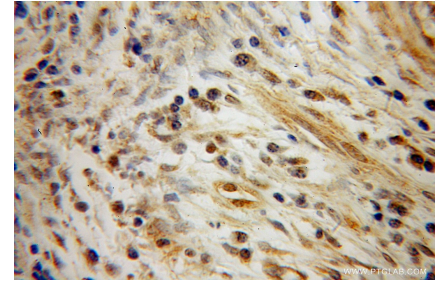
Selected Validation Data



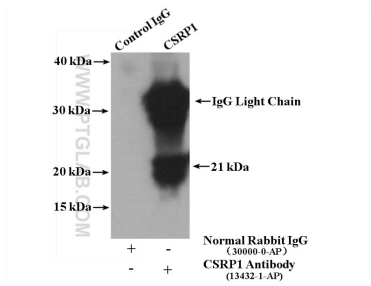
human stomach tissue were subjected to SDS PAGE followed by western blot with 13432-1-AP (CSR1 antibody) at dilution of 1:500 incubated at room temperature for 1.5 hours.



Immunohistochemical analysis of paraffin-embedded human cervical cancer using 13432-1-AP (CSR1 antibody) at dilution of 1:100 (under 10x lens).



Immunohistochemical analysis of paraffin-embedded human cervical cancer using 13432-1-AP (CSR1 antibody) at dilution of 1:100 (under 40x lens).



mouse stomach tissue were subjected to SDS PAGE followed by western blot with 13432-1-AP (CSR1 antibody) at dilution of 1:300.