

For Research Use Only

GIMAP2 Polyclonal antibody

Catalog Number: 13445-1-AP



Basic Information

Catalog Number: 13445-1-AP	GenBank Accession Number: BC032345	Purification Method: Antigen affinity purification
Size: 150ul , Concentration: 500 ug/ml by Nanodrop and 333 ug/ml by Bradford method using BSA as the standard;	GeneID (NCBI): 26157	Recommended Dilutions: WB 1:500-1:1000 IHC 1:50-1:500
Source: Rabbit	UNIPROT ID: Q9UG22	
Isotype: IgG	Full Name: GTPase, IMAP family member 2	
Immunogen Catalog Number: AG4273	Calculated MW: 337 aa, 38 kDa	
	Observed MW: 28-40 kDa	

Applications

Tested Applications: WB, IHC, ELISA	Positive Controls:
Species Specificity: human	WB : human heart tissue, human kidney tissue
Note-IHC: suggested antigen retrieval with TE buffer pH 9.0; (*) Alternatively, antigen retrieval may be performed with citrate buffer pH 6.0	IHC : human heart tissue,

Background Information

This protein was not eliminated clearly. It belongs to GTPase of the immunity-associated protein family. One of its homologous protein, GIMAP1, runs as a 30kd protein in SDS-PAGE, lower than the calculated molecular weight. This antibody detected one 28kd band in several tissues.

Storage

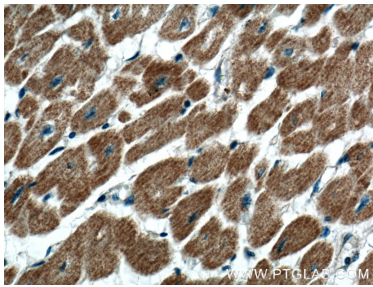
Storage:
Store at -20°C. Stable for one year after shipment.
Storage Buffer:
PBS with 0.02% sodium azide and 50% glycerol pH 7.3.
Aliquoting is unnecessary for -20°C storage

*** 20ul sizes contain 0.1% BSA

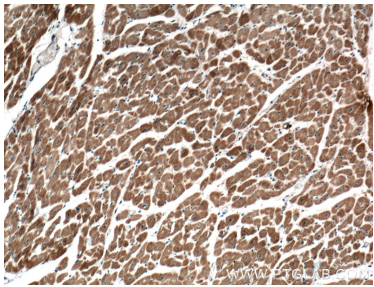
For technical support and original validation data for this product please contact:
T: 1 (888) 4PTGLAB (1-888-478-4522) (toll free in USA), or 1(312) 455-8498 (outside USA)
E: proteintech@ptglab.com
W: ptglab.com

This product is exclusively available under Proteintech Group brand and is not available to purchase from any other manufacturer.

Selected Validation Data



Immunohistochemical analysis of paraffin-embedded human heart tissue slide using 13445-1-AP (GIMAP2 antibody) at dilution of 1:200 (under 40x lens).



Immunohistochemical analysis of paraffin-embedded human heart tissue slide using 13445-1-AP (GIMAP2 antibody) at dilution of 1:200 (under 10x lens).



human heart tissue were subjected to SDS PAGE followed by western blot with 13445-1-AP (GIMAP2 antibody) at dilution of 1:300 incubated at room temperature for 1.5 hours.