

For Research Use Only

PSTPIP2 Polyclonal antibody

Catalog Number: 13450-1-AP

1 Publications



Basic Information

Catalog Number:

13450-1-AP

Size:

150ul, Concentration: 600 ug/ml by Nanodrop and 267 ug/ml by Bradford method using BSA as the standard;

Source:

Rabbit

Isotype:

IgG

Immunogen Catalog Number:

AG4293

GenBank Accession Number:

BC035395

GeneID (NCBI):

9050

UNIPROT ID:

Q9H939

Full Name:

proline-serine-threonine phosphatase interacting protein 2

Calculated MW:

312 aa, 36 kDa

Observed MW:

36 kDa

Purification Method:

Antigen affinity purification

Recommended Dilutions:

WB 1:500-1:1000

IP 0.5-4.0 ug for 1.0-3.0 mg of total protein lysate

Applications

Tested Applications:

WB, IP, ELISA

Cited Applications:

WB, IF

Species Specificity:

human, mouse, rat

Cited Species:

mouse

Positive Controls:

WB : RAW 264.7 cells,

IP : Raji cells,

Notable Publications

Author	Pubmed ID	Journal	Application
Changlin Du	38314821	Elife	WB,IF

Storage

Storage:

Store at -20°C. Stable for one year after shipment.

Storage Buffer:

PBS with 0.02% sodium azide and 50% glycerol pH 7.3.

Aliquoting is unnecessary for -20°C storage

*** 20ul sizes contain 0.1% BSA

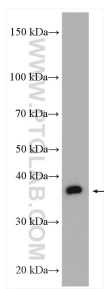
For technical support and original validation data for this product please contact:

T: 1 (888) 4PTGLAB (1-888-478-4522) (toll free in USA), or 1(312) 455-8498 (outside USA)

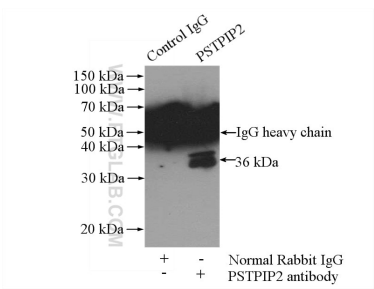
E: proteintech@ptglab.com
W: ptglab.com

This product is exclusively available under Proteintech Group brand and is not available to purchase from any other manufacturer.

Selected Validation Data



RAW 264.7 cells were subjected to SDS PAGE followed by western blot with 13450-1-AP (PSTPIP2 antibody) at dilution of 1:500 incubated at room temperature for 1.5 hours.



IP result of anti-PSTPIP2 (IP:13450-1-AP, 4ug; Detection:13450-1-AP 1:500) with Raji cells lysate 2000ug.