

For Research Use Only

Siglec-6 Polyclonal antibody

Catalog Number: 13454-1-AP

1 Publications



Basic Information

Catalog Number:

13454-1-AP

Size:

150ul, Concentration: 600 ug/ml by Nanodrop and 400 ug/ml by Bradford method using BSA as the standard;

Source:

Rabbit

Isotype:

IgG

Immunogen Catalog Number:

AG4281

GenBank Accession Number:

BC035359

GeneID (NCBI):

946

UNIPROT ID:

O43699

Full Name:

sialic acid binding Ig-like lectin 6

Calculated MW:

426 aa, 47 kDa

Purification Method:

Antigen affinity purification

Recommended Dilutions:

IHC 1:500-1:2000

Applications

Tested Applications:

IHC, ELISA

Cited Applications:

WB

Species Specificity:

human

Cited Species:

human

Positive Controls:

IHC : human placenta tissue,

Note-IHC: suggested antigen retrieval with TE buffer pH 9.0; (*) Alternatively, antigen retrieval may be performed with citrate buffer pH 6.0

Background Information

Siglec-6, originally identified on trophoblast cells of the placenta, is highly and consistently expressed on MCs from both mucosal and non-mucosal sites. Siglec-6 consists of 3 extracellular immunoglobulin (Ig) domains and 2 intracellular immunoreceptor tyrosine-based inhibition motifs (ITIMs), closely resembling the molecular structure of Siglec-3 (CD33) (PMID: 34289026). Siglec-6 was recruited to placental expression during human evolution, presumably to interact with sialylated ligands for specific negative signaling functions and/or to regulate leptin availability (PMID: 17580316). Siglec-6 is an immunoreceptor tyrosine-based inhibitory motif (ITIM)-bearing receptor selectively expressed by mast cells, making it a promising target for therapeutic intervention (PMID: 35406705).

Notable Publications

Author	Pubmed ID	Journal	Application
Xinyue Dong	39111624	J Adv Res	WB

Storage

Storage:

Store at -20°C. Stable for one year after shipment.

Storage Buffer:

PBS with 0.02% sodium azide and 50% glycerol pH 7.3.

Aliquoting is unnecessary for -20°C storage

*** 20ul sizes contain 0.1% BSA

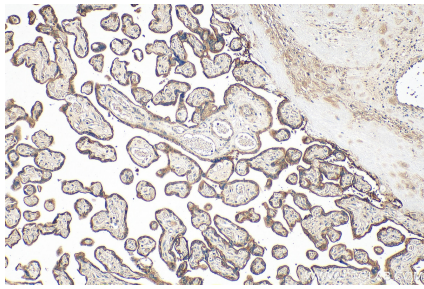
For technical support and original validation data for this product please contact:

T: 1 (888) 4PTGLAB (1-888-478-4522) (toll free in USA), or 1(312) 455-8498 (outside USA)

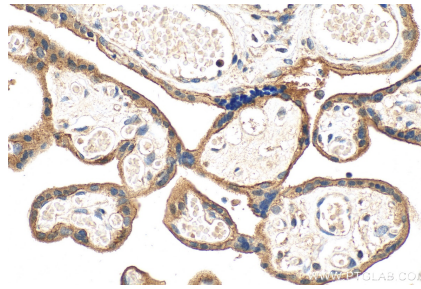
E: proteintech@ptglab.com
W: ptglab.com

This product is exclusively available under Proteintech Group brand and is not available to purchase from any other manufacturer.

Selected Validation Data



Immunohistochemical analysis of paraffin-embedded human placenta tissue slide using 13454-1-AP (Siglec-6 antibody) at dilution of 1:1000 (under 10x lens). Heat mediated antigen retrieval with Tris-EDTA buffer (pH 9.0).



Immunohistochemical analysis of paraffin-embedded human placenta tissue slide using 13454-1-AP (Siglec-6 antibody) at dilution of 1:1000 (under 40x lens). Heat mediated antigen retrieval with Tris-EDTA buffer (pH 9.0).