

For Research Use Only

GK5 Polyclonal antibody

Catalog Number: 13457-1-AP

Featured Product

2 Publications



Basic Information

Catalog Number:

13457-1-AP

Size:

150ul, Concentration: 350 ug/ml by Nanodrop and 147 ug/ml by Bradford method using BSA as the standard;

Source:

Rabbit

Isotype:

IgG

Immunogen Catalog Number:

AG4269

GenBank Accession Number:

BC032470

GeneID (NCBI):

256356

UNIPROT ID:

Q6ZS86

Full Name:

glycerol kinase 5 (putative)

Calculated MW:

529 aa, 59 kDa

Observed MW:

59 kDa

Purification Method:

Antigen affinity purification

Recommended Dilutions:

WB 1:500-1:2000

Applications

Tested Applications:

WB, ELISA

Cited Applications:

WB, IF

Species Specificity:

human, mouse, rat

Cited Species:

human

Positive Controls:

WB: Jurkat cells,

Background Information

GK5(Putative glycerol kinase 5) is also named as ATP:glycerol 3-phosphotransferase 5 and belongs to the FGGY kinase family. It is involved in Glycerol metabolism and catalyzes the phosphorylation of glycerol by ATP, yielding ADP and glycerol-3-phosphate. It has 3 isoforms produced by alternative splicing with the MW of 59 kDa, 34 kDa and 28 kDa.

Notable Publications

Author	Pubmed ID	Journal	Application
Mengnan Yan	33462866	Clin Exp Pharmacol Physiol	WB
Jian Zhou	30791926	J Exp Clin Cancer Res	WB, IF

Storage

Storage:

Store at -20°C. Stable for one year after shipment.

Storage Buffer:

PBS with 0.02% sodium azide and 50% glycerol pH 7.3.

Aliquoting is unnecessary for -20°C storage

*** 20ul sizes contain 0.1% BSA

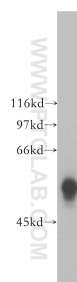
For technical support and original validation data for this product please contact:

T: 1 (888) 4PTGLAB (1-888-478-4522) (toll free in USA), or 1(312) 455-8498 (outside USA)

E: proteintech@ptglab.com
W: ptglab.com

This product is exclusively available under Proteintech Group brand and is not available to purchase from any other manufacturer.

Selected Validation Data



Jurkat cells were subjected to SDS PAGE followed by western blot with 13457-1-AP (GK5 antibody) at dilution of 1:500 incubated at room temperature for 1.5 hours.