

For Research Use Only

IL-22RA1 Polyclonal antibody

Catalog Number: 13462-1-AP

17 Publications



Basic Information

Catalog Number:

13462-1-AP

Size:

150ul, Concentration: 700 ug/ml by Nanodrop;

Source:

Rabbit

Isotype:

IgG

Immunogen Catalog Number:

AG4056

GenBank Accession Number:

BC029273

GeneID (NCBI):

58985

UNIPROT ID:

Q8N6P7

Full Name:

interleukin 22 receptor, alpha 1

Calculated MW:

574 aa, 63 kDa

Observed MW:

63-68 kDa

Purification Method:

Antigen affinity purification

Recommended Dilutions:

WB 1:1000-1:4000

IF 1:50-1:500

Applications

Tested Applications:

WB, IF, ELISA, FC (Intra)

Cited Applications:

WB, IHC, IF, IP

Species Specificity:

human, mouse, rat

Cited Species:

human, mouse, rat, pig

Positive Controls:

WB : COLO 320 cells, HEK-293 cells, HepG2 cells, HT-29 cells, mouse small intestine tissue, mouse heart tissue

IF : human gut,

Background Information

Interleukin-22 (IL-22), a member of the IL-10 family of cytokines, is important for the modulation of tissue responses during inflammation. IL-22 receptor is a heterodimer of the IL-10RB and IL-22RA1. IL-22RA1 belongs to the class II cytokine receptor family. It is expressed in a limited number of tissues including skin, colon, liver, lung, pancreas and kidney. The expression is lack in immune cells such as monocytes, T cells, and NK cells (PMID: 15308104). IL-22RA1 can also form a receptor for IL-20 and IL-24 with IL20RB (PMID: 23793061).

Notable Publications

Author	Pubmed ID	Journal	Application
Zixuan Gao	36103628	Am J Physiol Endocrinol Metab	WB,IF
Yufei Wang	36201050	Cell Tissue Res	IF
Shidi Wu	31790685	Life Sci	WB

Storage

Storage:

Store at -20°C. Stable for one year after shipment.

Storage Buffer:

PBS with 0.02% sodium azide and 50% glycerol pH 7.3.

Aliquoting is unnecessary for -20°C storage

*** 20ul sizes contain 0.1% BSA

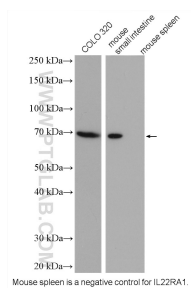
For technical support and original validation data for this product please contact:

T: 1 (888) 4PTGLAB (1-888-478-4522) (toll free in USA), or 1(312) 455-8498 (outside USA)

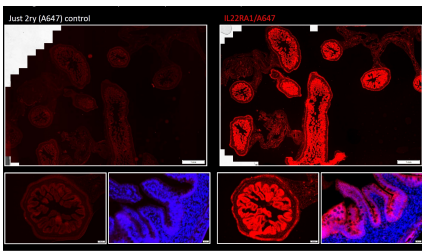
E: proteintech@ptglab.com
W: ptglab.com

This product is exclusively available under Proteintech Group brand and is not available to purchase from any other manufacturer.

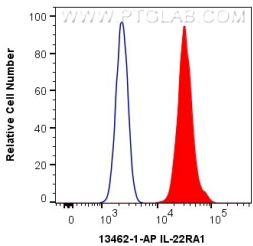
Selected Validation Data



Various lysates were subjected to SDS PAGE followed by western blot with 13462-1-AP (IL22RA1 antibody) at dilution of 1:2000 incubated at room temperature for 1.5 hours.



Staining of IL22RA1 (Cat#13462-1-AP) (2ryAbisA647) on FFPE human gut. The nuclei were counter stained with DAPI (in blue). The IL22RA1 signal is localized in the epithelial compartment which is expected. (Data from Manuel Florez, Laboratory Dre. Naglaa Shoukry, CRCHUM).



1X10⁶ HepG2 cells were intracellularly stained with 0.4 ug Anti-Human IL-22RA1 (13462-1-AP) and CoraLite®488-Conjugated Goat Anti-Rabbit IgG(H+L) at dilution 1:1000 (red), or 0.4 ug Isotype Control. Cells were fixed with 4% PFA and permeabilized with Flow Cytometry Perm Buffer (PF00011-C).