

For Research Use Only

# SPARCL1 Polyclonal antibody

Catalog Number: 13517-1-AP **8 Publications**



## Basic Information

<b>Catalog Number:</b> 13517-1-AP	<b>GenBank Accession Number:</b> BC033721	<b>Purification Method:</b> Antigen affinity purification
<b>Size:</b> 150ul , Concentration: 1000 µg/ml by Nanodrop and 467 µg/ml by Bradford method using BSA as the standard;	<b>GeneID (NCBI):</b> 8404	<b>Recommended Dilutions:</b> WB 1:500-1:2000 IP 0.5-4.0 ug for IP and 1:200-1:1000 for WB IHC 1:50-1:500
<b>Source:</b> Rabbit	<b>Full Name:</b> SPARC-like 1 (hevin)	
<b>Isotype:</b> IgG	<b>Calculated MW:</b> 664 aa, 75 kDa	
<b>Immunogen Catalog Number:</b> AG4448	<b>Observed MW:</b> 130-140 kDa	

## Applications

<b>Tested Applications:</b> IHC, IP, WB, ELISA	<b>Positive Controls:</b>
<b>Cited Applications:</b> IF, IHC, WB	<b>WB :</b> human heart tissue,
<b>Species Specificity:</b> human	<b>IP :</b> Raji cells,
<b>Cited Species:</b> human, mouse	<b>IHC :</b> human tonsillitis tissue, human gliomas tissue
<b>Note-IHC: suggested antigen retrieval with TE buffer pH 9.0; (*) Alternatively, antigen retrieval may be performed with citrate buffer pH 6.0</b>	

## Background Information

SPARC-like protein 1 (SPARCL1), also known as SC1 or Hevin, is an extracellular matrix glycoprotein that belongs to the SPARC family. SPARCL1 is widely expressed in normal and cancer tissues, and has been shown to regulate cellular adhesion and migration. SPARCL1 has been implicated in tumor initiation, formation, and progression of various cancers, including pancreatic, prostate, bladder, ovarian, breast and non-small cell lung cancers.

## Notable Publications

Author	Pubmed ID	Journal	Application
A R Jayakumar	27735996	J Neurochem	
Lite Ge	31783092	J Chem Neuroanat	WB
Masao Nakajima	29403557	Oncol Lett	IHC

## Storage

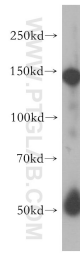
**Storage:**  
Store at -20°C. Stable for one year after shipment.  
**Storage Buffer:**  
PBS with 0.02% sodium azide and 50% glycerol pH 7.3.  
Aliquoting is unnecessary for -20°C storage

\*\*\* 20ul sizes contain 0.1% BSA

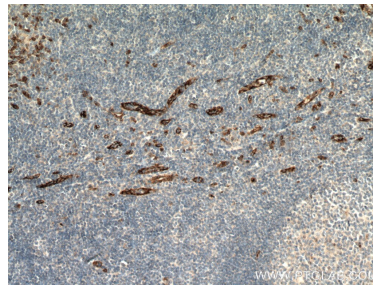
For technical support and original validation data for this product please contact:  
T: 1 (888) 4PTGLAB (1-888-478-4522) (toll free in USA), or 1(312) 455-8498 (outside USA)  
E: proteintech@ptglab.com  
W: ptglab.com

This product is exclusively available under Proteintech Group brand and is not available to purchase from any other manufacturer.

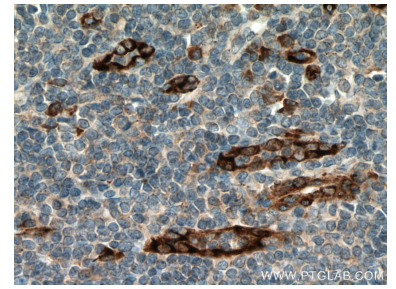
## Selected Validation Data



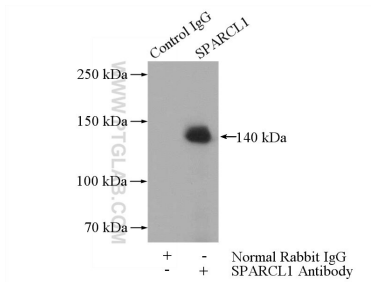
human heart tissue were subjected to SDS PAGE followed by western blot with 13517-1-AP (SPARCL1 antibody) at dilution of 1:400 incubated at room temperature for 1.5 hours.



Immunohistochemical analysis of paraffin-embedded human tonsillitis tissue slide using 13517-1-AP (SPARCL1 antibody) at dilution of 1:200 (under 10x lens. Heat mediated antigen retrieval with Tris-EDTA buffer (pH 9.0).



Immunohistochemical analysis of paraffin-embedded human tonsillitis tissue slide using 13517-1-AP (SPARCL1 antibody) at dilution of 1:200 (under 40x lens. Heat mediated antigen retrieval with Tris-EDTA buffer (pH 9.0).



IP Result of anti-SPARCL1 (IP:13517-1-AP, 4ug; Detection:13517-1-AP 1:300) with Raji cells lysate 1440ug.