

For Research Use Only

Choline Kinase Alpha Polyclonal antibody

Catalog Number: 13520-1-AP

Featured Product

23 Publications



Basic Information

Catalog Number:

13520-1-AP

Size:

150ul, Concentration: 500 ug/ml by Nanodrop and 300 ug/ml by Bradford method using BSA as the standard;

Source:

Rabbit

Isotype:

IgG

Immunogen Catalog Number:

AG4761

GenBank Accession Number:

BC036471

GeneID (NCBI):

1119

UNIPROT ID:

P35790

Full Name:

choline kinase alpha

Calculated MW:

439 aa, 52 kDa

Observed MW:

50 kDa

Purification Method:

Antigen affinity purification

Recommended Dilutions:

WB 1:1000-1:4000

IP 0.5-4.0 ug for 1.0-3.0 mg of total protein lysate

IHC 1:50-1:500

IF/ICC 1:200-1:800

Applications

Tested Applications:

WB, IHC, IF/ICC, IP, ELISA

Cited Applications:

WB, IHC, IF, ELISA

Species Specificity:

human, mouse, rat

Cited Species:

human, mouse, rat

Note-IHC: suggested antigen retrieval with TE buffer pH 9.0; (*) Alternatively, antigen retrieval may be performed with citrate buffer pH 6.0

Positive Controls:

WB: COLO 320 cells, mouse colon tissue, mouse spleen tissue, rat spleen tissue

IP: mouse spleen tissue,

IHC: human liver cancer tissue,

IF/ICC: HeLa cells,

Background Information

CHKA(Choline kinase alpha) is also named as CHK, CKI, EK(Ethanolamine kinase) and belongs to the choline/ethanolamine kinase family. Choline kinase (ATP:choline phosphotransferase) is a cytosolic enzyme that catalyzes the committed step in the synthesis of PC by the CDP-choline pathway. The enzyme catalyzes the phosphorylation of choline with ATP to form phosphocholine and ADP(PMID:9506987). It has 2 isoforms produced by alternative splicing with the molecular weight of 52 kDa and 50 kDa.

Notable Publications

Author	Pubmed ID	Journal	Application
Farhad Vesuna	36136285	Mol Cell Biochem	WB
Yantuanjin Ma	36372042	Placenta	IHC
Noriko Mori	26503172	NMR Biomed	WB

Storage

Storage:

Store at -20°C. Stable for one year after shipment.

Storage Buffer:

PBS with 0.02% sodium azide and 50% glycerol pH 7.3.

Aliquoting is unnecessary for -20°C storage

*** 20ul sizes contain 0.1% BSA

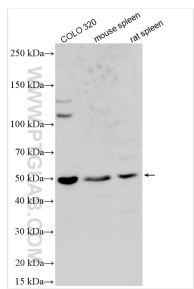
For technical support and original validation data for this product please contact:

T: 1 (888) 4PTGLAB (1-888-478-4522) (toll free in USA), or 1(312) 455-8498 (outside USA)

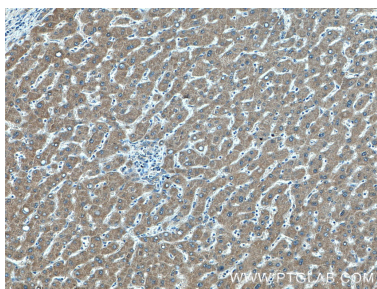
E: proteintech@ptglab.com
W: ptglab.com

This product is exclusively available under Proteintech Group brand and is not available to purchase from any other manufacturer.

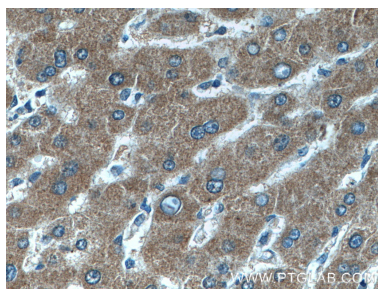
Selected Validation Data



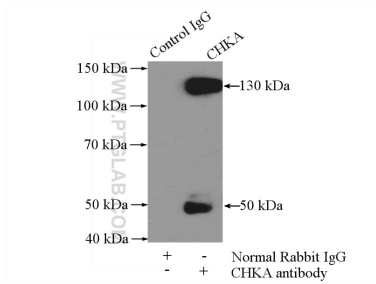
Various lysates were subjected to SDS PAGE followed by western blot with 13520-1-AP (Choline Kinase Alpha antibody) at dilution of 1:2000 incubated at room temperature for 1.5 hours.



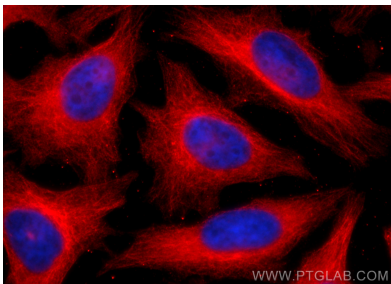
Immunohistochemical analysis of paraffin-embedded human liver cancer tissue slide using 13520-1-AP (Choline kinase alpha antibody) at dilution of 1:200 (under 10x lens).



Immunohistochemical analysis of paraffin-embedded human liver cancer tissue slide using 13520-1-AP (Choline kinase alpha antibody) at dilution of 1:200 (under 40x lens).



IP result of anti-Choline Kinase Alpha (IP:13520-1-AP, 4ug; Detection:13520-1-AP 1:500) with mouse spleen tissue lysate 4000ug.



Immunofluorescent analysis of (-20°C Methanol) fixed HeLa cells using Choline Kinase Alpha antibody (13520-1-AP) at dilution of 1:400 and CoraLite®594-Conjugated Goat Anti-Rabbit IgG(H+L) (SA00013-4).