

For Research Use Only

EML2 Polyclonal antibody

Catalog Number: 13529-1-AP

2 Publications



Basic Information

Catalog Number:

13529-1-AP

Size:

150ul, Concentration: 300 ug/ml by Nanodrop and 200 ug/ml by Bradford method using BSA as the standard;

Source:

Rabbit

Isotype:

IgG

Immunogen Catalog Number:

AG4423

GenBank Accession Number:

BC032630

GeneID (NCBI):

24139

UNIPROT ID:

O95834

Full Name:

echinoderm microtubule associated protein like 2

Calculated MW:

71 kDa

Observed MW:

71 kDa

Purification Method:

Antigen affinity purification

Recommended Dilutions:

WB 1:500-1:2000

IHC 1:20-1:200

Applications

Tested Applications:

WB, IHC, ELISA

Cited Applications:

WB, IF

Species Specificity:

human, mouse

Cited Species:

human, mouse

Note-IHC: suggested antigen retrieval with TE buffer pH 9.0; (*) Alternatively, antigen retrieval may be performed with citrate buffer pH 6.0

Positive Controls:

WB : mouse heart tissue, mouse stomach tissue

IHC : human prostate cancer tissue,

Notable Publications

Author	Pubmed ID	Journal	Application
Sandeep Aryal	31797049	Hum Genet	IF
Takashi Hotta	35963242	Curr Biol	WB,IF

Storage

Storage:

Store at -20°C. Stable for one year after shipment.

Storage Buffer:

PBS with 0.02% sodium azide and 50% glycerol pH 7.3.

Aliquoting is unnecessary for -20°C storage

*** 20ul sizes contain 0.1% BSA

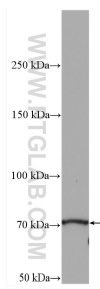
For technical support and original validation data for this product please contact:

T: 1 (888) 4PTGLAB (1-888-478-4522) (toll free in USA), or 1(312) 455-8498 (outside USA)

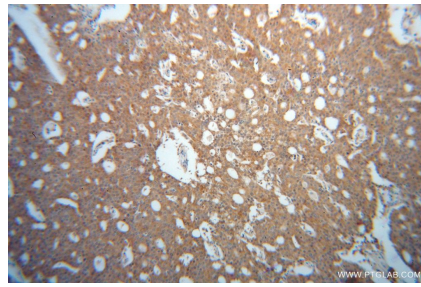
E: proteintech@ptglab.com
W: ptglab.com

This product is exclusively available under Proteintech Group brand and is not available to purchase from any other manufacturer.

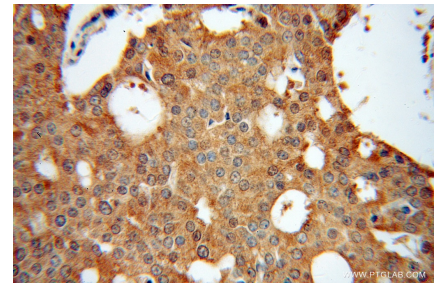
Selected Validation Data



mouse heart tissue were subjected to SDS PAGE followed by western blot with 13529-1-AP (EML2 antibody) at dilution of 1:1000 incubated at room temperature for 1.5 hours.



Immunohistochemical analysis of paraffin-embedded human prostate cancer using 13529-1-AP (EML2 antibody) at dilution of 1:100 (under 10x lens).



Immunohistochemical analysis of paraffin-embedded human prostate cancer using 13529-1-AP (EML2 antibody) at dilution of 1:100 (under 40x lens).