

For Research Use Only

# Alpha-2-Macroglobulin Polyclonal antibody

Catalog Number: 13545-1-AP

3 Publications



## Basic Information

### Catalog Number:

13545-1-AP

### Size:

150ul, Concentration: 500 ug/ml by Nanodrop;

### Source:

Rabbit

### Isotype:

IgG

### Immunogen Catalog Number:

AG4489

### GenBank Accession Number:

BC040071

### GeneID (NCBI):

2

### UNIPROT ID:

P01023

### Full Name:

alpha-2-macroglobulin

### Calculated MW:

1474 aa, 163 kDa

### Observed MW:

185 kDa

### Purification Method:

Antigen affinity purification

### Recommended Dilutions:

WB 1:5000-1:20000

IP 0.5-4.0 ug for 1.0-3.0 mg of total protein lysate

IHC 1:50-1:500

IF/ICC 1:50-1:500

## Applications

### Tested Applications:

WB, IHC, IF/ICC, IP, ELISA

### Cited Applications:

WB, IF

### Species Specificity:

human

### Cited Species:

human, plasmodium falciparum

**Note-IHC: suggested antigen retrieval with TE buffer pH 9.0; (\*) Alternatively, antigen retrieval may be performed with citrate buffer pH 6.0**

### Positive Controls:

WB : human blood tissue, human brain tissue, HepG2 cells, human plasma tissue

IP : HepG2 cells,

IHC : human liver tissue, human colon tissue

IF/ICC : HepG2 cells,

## Background Information

alpha-2-macroglobulin, also known as  $\alpha$ 2-macroglobulin ( $\alpha$ 2M or A2M), is a protein abundant in the plasma of vertebrates and several invertebrates. A2M is an evolutionarily conserved arm of the innate immune system. It also mediates the proliferation of T cells and macrophages. A2M acts as a nonspecific protease inhibitor involved in the host defense mechanism that inactivates both endogenous and exogenous proteases, including trypsin, thrombin and collagenase. Even though A2M is produced predominantly by the liver, it may also be expressed in the reproductive tract, heart, and brain, and may have important roles in many physiological processes and medical illnesses including Alzheimer's disease.

## Notable Publications

Author	Pubmed ID	Journal	Application
Takahiro Tougan	32295584	Malar J	WB
Riikka Lampinen	35456941	Int J Mol Sci	WB
Mateusz Olbromski	39005669	Am J Cancer Res	IF

## Storage

### Storage:

Store at -20°C. Stable for one year after shipment.

### Storage Buffer:

PBS with 0.02% sodium azide and 50% glycerol pH 7.3.

Aliquoting is unnecessary for -20°C storage

\*\*\* 20ul sizes contain 0.1% BSA

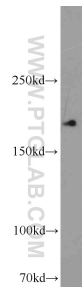
For technical support and original validation data for this product please contact:

T: 1 (888) 4PTGLAB (1-888-478-4522) (toll free in USA), or 1(312) 455-8498 (outside USA)

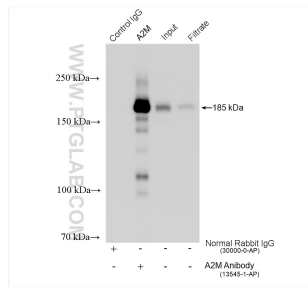
E: proteintech@ptglab.com  
W: ptglab.com

This product is exclusively available under Proteintech Group brand and is not available to purchase from any other manufacturer.

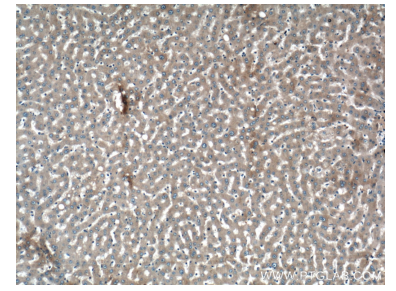
## Selected Validation Data



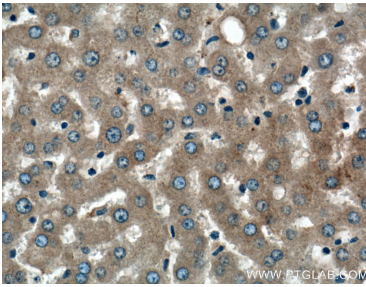
human blood were subjected to SDS PAGE followed by western blot with 13545-1-AP (Alpha-2-macroglobulin antibody) at dilution of 1:6000 incubated at room temperature for 1.5 hours.



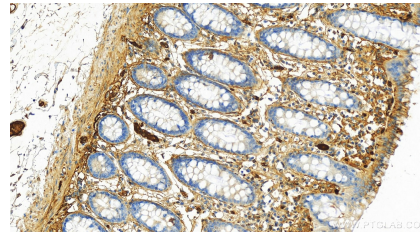
IP result of anti-Alpha-2-Macroglobulin (IP:13545-1-AP, 4ug; Detection:13545-1-AP 1:2000) with HepG2 cells lysate 1080 ug.



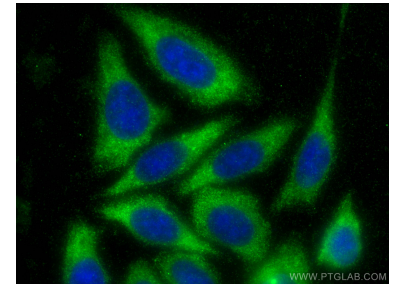
Immunohistochemical analysis of paraffin-embedded human liver tissue slide using 13545-1-AP (Alpha-2-macroglobulin antibody) at dilution of 1:200 (under 10x lens).



Immunohistochemical analysis of paraffin-embedded human liver tissue slide using 13545-1-AP (Alpha-2-macroglobulin antibody) at dilution of 1:200 (under 40x lens).



Immunohistochemical analysis of paraffin-embedded human normal colon slide using 13545-1-AP (Alpha-2-Macroglobulin antibody) at dilution of 1:1200 (under 20x lens). Heat mediated antigen retrieval with Tris-EDTA buffer (pH 9.0).



Immunofluorescent analysis of (-20°C Ethanol) fixed HepG2 cells using Alpha-2-Macroglobulin antibody (13545-1-AP) at dilution of 1:200 and CoraLite@488-Conjugated AffiniPure Goat Anti-Rabbit IgG(H+L).