

For Research Use Only

# PES1 Polyclonal antibody

Catalog Number: 13553-1-AP

Featured Product

5 Publications



## Basic Information

### Catalog Number:

13553-1-AP

### Size:

150ul, Concentration: 500 ug/ml by Nanodrop and 367 ug/ml by Bradford method using BSA as the standard;

### Source:

Rabbit

### Isotype:

IgG

### Immunogen Catalog Number:

AG4342

### GenBank Accession Number:

BC032489

### GeneID (NCBI):

23481

### UNIPROT ID:

O00541

### Full Name:

pescadillo homolog 1, containing BRCT domain (zebrafish)

### Calculated MW:

588 aa, 68 kDa

### Observed MW:

72 kDa

### Purification Method:

Antigen affinity purification

### Recommended Dilutions:

WB 1:2000-1:10000

IP 0.5-4.0 ug for 1.0-3.0 mg of total protein lysate

IHC 1:50-1:500

IF/ICC 1:50-1:500

## Applications

### Tested Applications:

WB, IHC, IF/ICC, IP, ELISA

### Cited Applications:

WB, IHC, IP, IF

### Species Specificity:

human

### Cited Species:

human, mouse, goat

**Note-IHC: suggested antigen retrieval with TE buffer pH 9.0; (\*) Alternatively, antigen retrieval may be performed with citrate buffer pH 6.0**

### Positive Controls:

WB : COLO 320 cells, MCF-7 cells

IP : COLO 320 cells,

IHC : human gliomas tissue,

IF/ICC : MCF-7 cells,

## Notable Publications

Author	Pubmed ID	Journal	Application
Zhipeng Sun	36499219	Int J Mol Sci	WB
Zehua Bian	34782005	J Exp Clin Cancer Res	WB,IHC,IP
Jing Wang	30630006	Life Sci	WB,IHC

## Storage

### Storage:

Store at -20°C. Stable for one year after shipment.

### Storage Buffer:

PBS with 0.02% sodium azide and 50% glycerol pH 7.3.

Aliquoting is unnecessary for -20°C storage

\*\*\* 20ul sizes contain 0.1% BSA

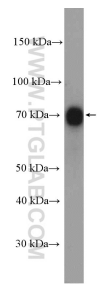
For technical support and original validation data for this product please contact:

T: 1 (888) 4PTGLAB (1-888-478-4522) (toll free in USA), or 1(312) 455-8498 (outside USA)

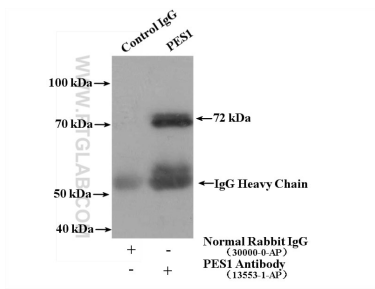
E: [proteintech@ptglab.com](mailto:proteintech@ptglab.com)  
W: [ptglab.com](http://ptglab.com)

This product is exclusively available under Proteintech Group brand and is not available to purchase from any other manufacturer.

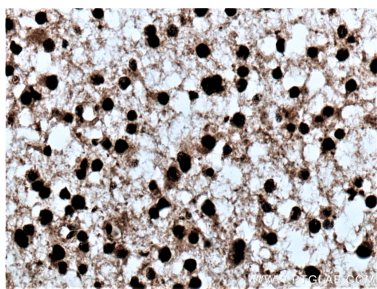
## Selected Validation Data



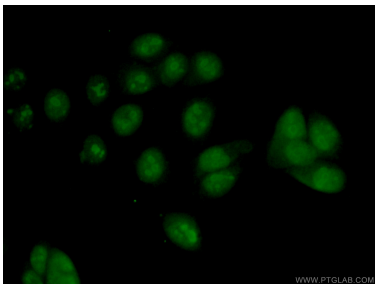
COLO 320 cells were subjected to SDS PAGE followed by western blot with 13553-1-AP (PES1 antibody) at dilution of 1:5000 incubated at room temperature for 1.5 hours.



COLO 320 cells were subjected to SDS PAGE followed by western blot with 13553-1-AP (PES1 antibody) at dilution of 1:300.



Immunohistochemical analysis of paraffin-embedded human gliomas tissue slide using 13553-1-AP (PES1 antibody) at dilution of 1:200 (under 40x lens. Heat mediated antigen retrieval with Tris-EDTA buffer (pH 9.0).



Immunofluorescent analysis of (4% PFA) fixed MCF-7 cells using 13553-1-AP (PES1 antibody) at dilution of 1:50 and Alexa Fluor 488-conjugated AffiniPure Goat Anti-Rabbit IgG(H+L).