

For Research Use Only

# APC2 Polyclonal antibody

Catalog Number: 13559-1-AP

Featured Product

4 Publications



## Basic Information

### Catalog Number:

13559-1-AP

### Size:

150ul, Concentration: 500 ug/ml by Nanodrop and 333 ug/ml by Bradford method using BSA as the standard;

### Source:

Rabbit

### Isotype:

IgG

### Immunogen Catalog Number:

AG4427

### GenBank Accession Number:

BC032503

### GeneID (NCBI):

29882

### UNIPROT ID:

Q9UJX6

### Full Name:

anaphase promoting complex subunit 2

### Calculated MW:

822 aa, 94 kDa

### Observed MW:

97 kDa

### Purification Method:

Antigen affinity purification

### Recommended Dilutions:

WB 1:500-1:3000

IP 0.5-4.0 ug for 1.0-3.0 mg of total protein lysate

IHC 1:200-1:800

IF/ICC 1:50-1:500

## Applications

### Tested Applications:

WB, IHC, IF/ICC, IP, ELISA

### Cited Applications:

WB, IF

### Species Specificity:

human, mouse, rat

### Cited Species:

human, mouse

**Note-IHC: suggested antigen retrieval with TE buffer pH 9.0; (\*) Alternatively, antigen retrieval may be performed with citrate buffer pH 6.0**

### Positive Controls:

WB : HeLa cells, Jurkat cells, MCF-7 cells

IP : MCF-7 cells,

IHC : human breast cancer tissue,

IF/ICC : MCF-7 cells,

## Notable Publications

Author	Pubmed ID	Journal	Application
Aizhong Chen	32687671	FASEB J	WB,IF
Qi Li	39018254	Adv Sci (Weinh)	WB
Zhe Hao	37002708	FEBS J	WB

## Storage

### Storage:

Store at -20°C. Stable for one year after shipment.

### Storage Buffer:

PBS with 0.02% sodium azide and 50% glycerol pH 7.3.

Aliquoting is unnecessary for -20°C storage

\*\*\* 20ul sizes contain 0.1% BSA

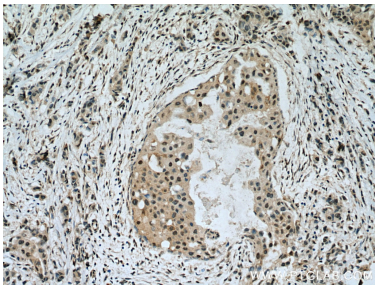
For technical support and original validation data for this product please contact:

T: 1 (888) 4PTGLAB (1-888-478-4522) (toll free in USA), or 1(312) 455-8498 (outside USA)

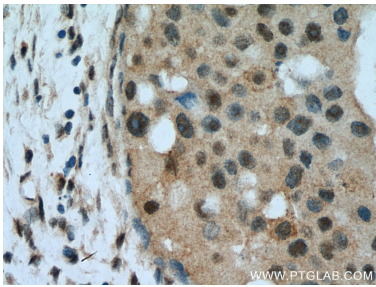
E: [proteintech@ptglab.com](mailto:proteintech@ptglab.com)  
W: [ptglab.com](http://ptglab.com)

This product is exclusively available under Proteintech Group brand and is not available to purchase from any other manufacturer.

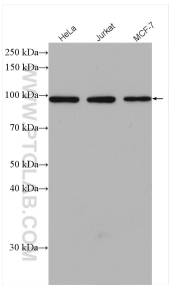
Selected Validation Data



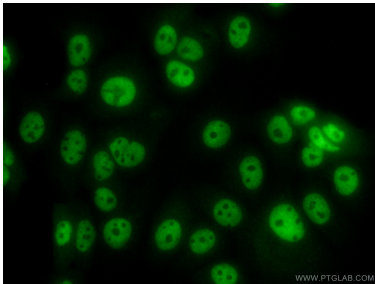
Immunohistochemical analysis of paraffin-embedded human breast cancer tissue slide using 13559-1-AP (APC2 antibody) at dilution of 1:400 (under 10x lens). Heat mediated antigen retrieval with Tris-EDTA buffer (pH 9.0).



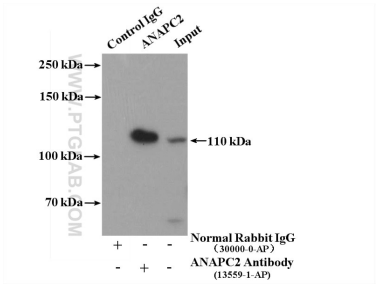
Immunohistochemical analysis of paraffin-embedded human breast cancer tissue slide using 13559-1-AP (APC2 antibody) at dilution of 1:400 (under 40x lens). Heat mediated antigen retrieval with Tris-EDTA buffer (pH 9.0).



Various lysates were subjected to SDS PAGE followed by western blot with 13559-1-AP (APC2 antibody) at dilution of 1:2000 incubated at room temperature for 1.5 hours.



Immunofluorescent analysis of (10% Formaldehyde) fixed MCF-7 cells using 13559-1-AP (APC2 antibody) at dilution of 1:50 and Alexa Fluor 488-conjugated Goat Anti-Rabbit IgG(H+L).



IP result of anti-APC2 (IP:13559-1-AP, 4ug; Detection:13559-1-AP 1:300) with MCF-7 cells lysate 3200ug.