

For Research Use Only

ABCG1 Polyclonal antibody

Catalog Number: 13578-1-AP

Featured Product

54 Publications



Basic Information

Catalog Number:

13578-1-AP

Size:

150ul, Concentration: 500 ug/ml by Nanodrop;

Source:

Rabbit

Isotype:

IgG

Immunogen Catalog Number:

AG4479

GenBank Accession Number:

BC029158

GeneID (NCBI):

9619

UNIPROT ID:

P45844

Full Name:

ATP-binding cassette, sub-family G (WHITE), member 1

Calculated MW:

678 aa, 76 kDa

Observed MW:

75 kDa

Purification Method:

Antigen affinity purification

Recommended Dilutions:

WB 1:1000-1:8000

IP 0.5-4.0 ug for 1.0-3.0 mg of total protein lysate

IHC 1:50-1:500

Applications

Tested Applications:

WB, IP, IHC, ELISA

Cited Applications:

WB, IHC, IF

Species Specificity:

human, mouse, rat

Cited Species:

human, mouse, rat

Note-IHC: suggested antigen retrieval with TE buffer pH 9.0; (*) Alternatively, antigen retrieval may be performed with citrate buffer pH 6.0

Positive Controls:

WB: HUVEC cells, RAW 264.7 cells, HeLa cells, HepG2 cells, mouse kidney tissue, rat kidney tissue

IP: mouse brain tissue,

IHC: mouse placenta tissue, human tonsillitis tissue, human cervical cancer tissue

Background Information

ABCG1 is a cholesterol and phospholipid transporter expressed in lung, brain, spleen, and macrophages. In liver, ABCG1 is expressed mainly in Kupffer cells. The monomer of ABCG1 is around 60-65 kDa, while multiple forms of ABCG1 can be observed on SDS-PAGE, including 130 kDa (dimer), 90-95 kDa, 110 kDa. It was not clear whether the glycosylation or splicing accounts for the differences in mass. (PMID: 16702602)

Notable Publications

Author	Pubmed ID	Journal	Application
Xuan He	30218721	Life Sci	WB
Ling Zhang	27365310	Biochim Biophys Acta	WB, IF
Ying Luo	31667852	J Sci Food Agric	WB

Storage

Storage:

Store at -20°C. Stable for one year after shipment.

Storage Buffer:

PBS with 0.02% sodium azide and 50% glycerol, pH7.3

Aliquoting is unnecessary for -20°C storage

*** 20ul sizes contain 0.1% BSA

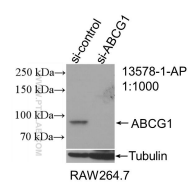
For technical support and original validation data for this product please contact:

T: 1 (888) 4PTGLAB (1-888-478-4522) (toll free in USA), or 1(312) 455-8498 (outside USA)

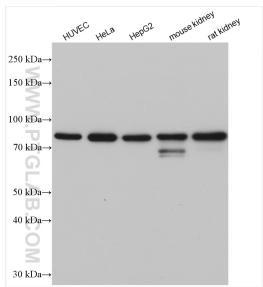
E: proteintech@ptglab.com
W: ptglab.com

This product is exclusively available under Proteintech Group brand and is not available to purchase from any other manufacturer.

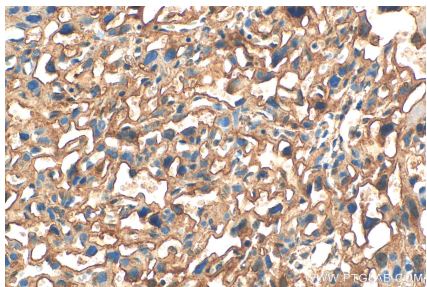
Selected Validation Data



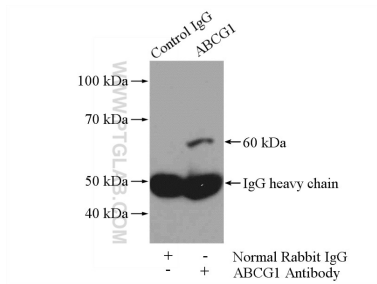
WB result of ABCG1 antibody (13578-1-AP; 1:1000; incubated at room temperature for 1.5 hours) with sh-Control and sh-ABCG1 transfected RAW 264.7 cells.



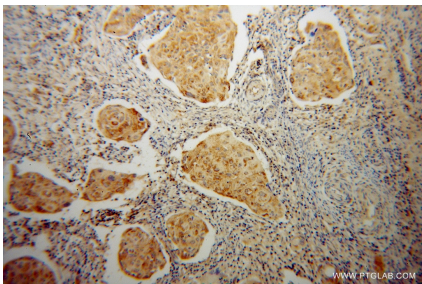
Various lysates were subjected to SDS PAGE followed by western blot with 13578-1-AP (ABCG1 antibody) at dilution of 1:4000 incubated at room temperature for 1.5 hours.



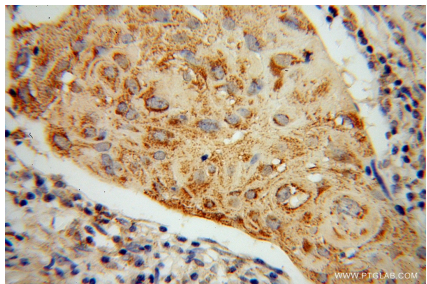
Immunohistochemical analysis of paraffin-embedded mouse placenta tissue slide using 13578-1-AP (ABCG1 antibody) at dilution of 1:200 (under 40x lens). Heat mediated antigen retrieval with Tris-EDTA buffer (pH 9.0).



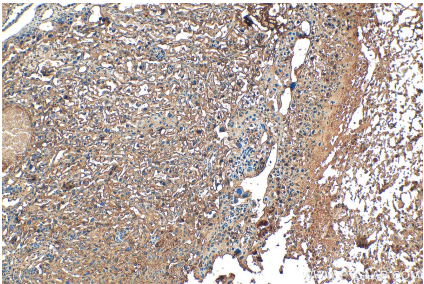
IP result of anti-ABCG1 (IP:13578-1-AP, 4ug; Detection:13578-1-AP 1:1000) with mouse brain tissue lysate 4000ug.



Immunohistochemical analysis of paraffin-embedded human cervical cancer using 13578-1-AP (ABCG1 antibody) at dilution of 1:100 (under 10x lens).



Immunohistochemical analysis of paraffin-embedded human cervical cancer using 13578-1-AP (ABCG1 antibody) at dilution of 1:100 (under 40x lens).



Immunohistochemical analysis of paraffin-embedded mouse placenta tissue slide using 13578-1-AP (ABCG1 antibody) at dilution of 1:200 (under 10x lens). Heat mediated antigen retrieval with Tris-EDTA buffer (pH 9.0).