

For Research Use Only

# FKBP6 Polyclonal antibody

Catalog Number: 13582-1-AP



## Basic Information

<b>Catalog Number:</b> 13582-1-AP	<b>GenBank Accession Number:</b> BC036817	<b>Purification Method:</b> Antigen affinity purification
<b>Size:</b> 150ul , Concentration: 353 µg/ml by Bradford method using BSA as the standard;	<b>GeneID (NCBI):</b> 8468	<b>Recommended Dilutions:</b> WB 1:500-1:2400 IHC 1:20-1:200
<b>Source:</b> Rabbit	<b>UNIPROT ID:</b> O75344	
<b>Isotype:</b> IgG	<b>Full Name:</b> FK506 binding protein 6, 36kDa	
<b>Immunogen Catalog Number:</b> AG4505	<b>Calculated MW:</b> 327 aa, 37 kDa	
	<b>Observed MW:</b> 36 kDa	

## Applications

### Tested Applications:

WB, IHC, ELISA

### Species Specificity:

human, mouse, rat

**Note-IHC: suggested antigen retrieval with TE buffer pH 9.0; (\*) Alternatively, antigen retrieval may be performed with citrate buffer pH 6.0**

### Positive Controls:

WB : human testis tissue,

IHC : human testis tissue, human kidney tissue, human lung tissue, human placenta tissue, human skin tissue

## Storage

### Storage:

Store at -20°C. Stable for one year after shipment.

### Storage Buffer:

PBS with 0.02% sodium azide and 50% glycerol pH 7.3.

Aliquoting is unnecessary for -20°C storage

\*\*\* 20ul sizes contain 0.1% BSA

For technical support and original validation data for this product please contact:

T: 1 (888) 4PTGLAB (1-888-478-4522) (toll free in USA), or 1(312) 455-8498 (outside USA)

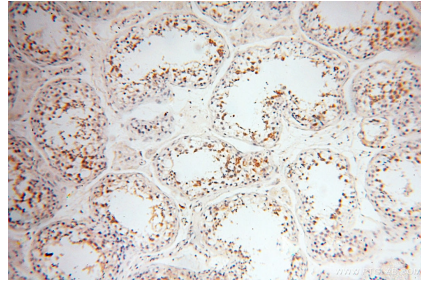
E: [proteintech@ptglab.com](mailto:proteintech@ptglab.com)  
W: [ptglab.com](http://ptglab.com)

This product is exclusively available under Proteintech Group brand and is not available to purchase from any other manufacturer.

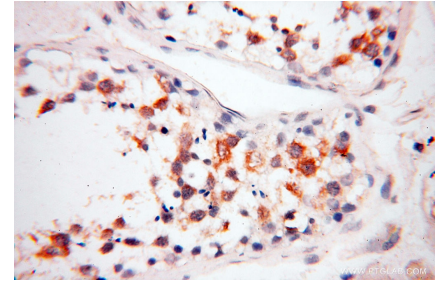
## Selected Validation Data



human testis tissue were subjected to SDS PAGE followed by western blot with 13582-1-AP (FKBP6 antibody) at dilution of 1:300 incubated at room temperature for 1.5 hours.



Immunohistochemical analysis of paraffin-embedded human testis using 13582-1-AP (FKBP6 antibody) at dilution of 1:100 (under 10x lens).



Immunohistochemical analysis of paraffin-embedded human testis using 13582-1-AP (FKBP6 antibody) at dilution of 1:100 (under 40x lens).