

For Research Use Only

LSAMP Polyclonal antibody

Catalog Number: 13600-1-AP



Basic Information

Catalog Number:

13600-1-AP

Size:

150ul, Concentration: 133 ug/ml by Nanodrop and 133 ug/ml by Bradford method using BSA as the standard;

Source:

Rabbit

Isotype:

IgG

Immunogen Catalog Number:

AG4542

GenBank Accession Number:

BC033803

GeneID (NCBI):

4045

UNIPROT ID:

Q13449

Full Name:

limbic system-associated membrane protein

Calculated MW:

338 aa, 37 kDa

Observed MW:

64-68 kDa

Purification Method:

Antigen affinity purification

Recommended Dilutions:

WB 1:500-1:2000

Applications

Tested Applications:

WB, ELISA

Species Specificity:

human, mouse, rat

Positive Controls:

WB : human brain tissue, mouse brain tissue

Background Information

LSAMP, also known as LAMP, is a 64-68 kDa heavily glycosylated neural cell adhesion molecule expressed on the neuronal dendrites and somata (PMID: 1688937; 8666243). LSAMP is a member of the IgLON family. The amino acid sequence of LSAMP is highly conserved among species. Human LSAMP shares 99% amino acid sequence identity with rodent LSAMP. The impact of LSAMP protein on neurite outgrowth and neuronal connectivity has been established in a wide spectrum of psychiatric disorders in humans (PMID: 26136648). In mice, lack of LSAMP protein seemingly leads to a deterioration in the ability to adapt to novel stressful environments and stimuli (PMID: 22155487).

Storage

Storage:

Store at -20°C. Stable for one year after shipment.

Storage Buffer:

PBS with 0.02% sodium azide and 50% glycerol pH 7.3.

Aliquoting is unnecessary for -20°C storage

*** 20ul sizes contain 0.1% BSA

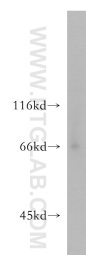
For technical support and original validation data for this product please contact:

T: 1 (888) 4PTGLAB (1-888-478-4522) (toll free in USA), or 1(312) 455-8498 (outside USA)

E: proteintech@ptglab.com
W: ptglab.com

This product is exclusively available under Proteintech Group brand and is not available to purchase from any other manufacturer.

Selected Validation Data



human brain tissue were subjected to SDS PAGE followed by western blot with 13600-1-AP (LSAMP antibody) at dilution of 1:300 incubated at room temperature for 1.5 hours.