

For Research Use Only

NSMCE2 Polyclonal antibody

Catalog Number: 13627-1-AP

Featured Product

3 Publications



Basic Information

Catalog Number:

13627-1-AP

Size:

150ul, Concentration: 550 ug/ml by Nanodrop;

Source:

Rabbit

Isotype:

IgG

Immunogen Catalog Number:

AG4545

GenBank Accession Number:

BC032797

GeneID (NCBI):

286053

UNIPROT ID:

Q96MF7

Full Name:

non-SMC element 2, MMS21 homolog (S. cerevisiae)

Calculated MW:

247 aa, 28 kDa

Observed MW:

28-32 kDa

Purification Method:

Antigen affinity purification

Recommended Dilutions:

WB: 1:500-1:2000

IHC: 1:50-1:500

Applications

Tested Applications:

WB, IHC, ELISA

Cited Applications:

WB

Species Specificity:

human, mouse, rat

Cited Species:

human

Note-IHC: suggested antigen retrieval with TE buffer pH 9.0; (*) Alternatively, antigen retrieval may be performed with citrate buffer pH 6.0

Positive Controls:

WB : HeLa cells, Jurkat cells, U2OS cells

IHC : mouse testis tissue, mouse ovary tissue

Notable Publications

Author	Pubmed ID	Journal	Application
Stephanie Pei Tung Yiu	35263599	Cell Rep	WB
Sara K Tucker	39660502	J Cell Sci	WB
Ishak D Irwan	36376394	Nat Microbiol	

Storage

Storage:

Store at -20°C. Stable for one year after shipment.

Storage Buffer:

PBS with 0.02% sodium azide and 50% glycerol, pH7.3

Aliquoting is unnecessary for -20°C storage

*** 20ul sizes contain 0.1% BSA

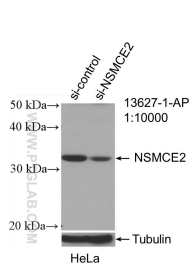
For technical support and original validation data for this product please contact:

T: 1 (888) 4PTGLAB (1-888-478-4522) (toll free in USA), or 1(312) 455-8498 (outside USA)

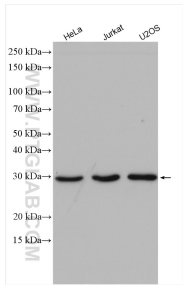
E: proteintech@ptglab.com
W: ptglab.com

This product is exclusively available under Proteintech Group brand and is not available to purchase from any other manufacturer.

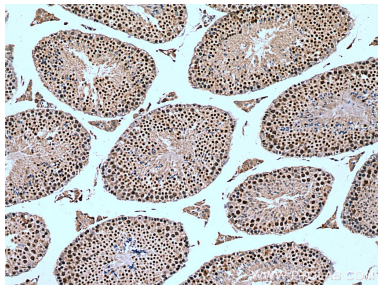
Selected Validation Data



WB result of NSMCE2 antibody (13627-1-AP; 1:10000; incubated at room temperature for 1.5 hours) with sh-Control and sh-NSMCE2 transfected HeLa cells.



Various lysates were subjected to SDS PAGE followed by western blot with 13627-1-AP (NSMCE2 antibody) at dilution of 1:1000 incubated at room temperature for 1.5 hours.



Immunohistochemical analysis of paraffin-embedded mouse testis tissue slide using 13627-1-AP (NSMCE2 antibody) at dilution of 1:200 (under 10x lens). Heat mediated antigen retrieval with Tris-EDTA buffer (pH 9.0).