

For Research Use Only

BCAT1 Polyclonal antibody

Catalog Number: 13640-1-AP

Featured Product

34 Publications



Basic Information

Catalog Number:

13640-1-AP

Size:

150ul, Concentration: 600 ug/ml by Nanodrop;

Source:

Rabbit

Isotype:

IgG

Immunogen Catalog Number:

AG4574

GenBank Accession Number:

BC033864

GeneID (NCBI):

586

UNIPROT ID:

P54687

Full Name:

branched chain aminotransferase 1, cytosolic

Calculated MW:

320 aa, 36 kDa

Observed MW:

43-45 kDa

Purification Method:

Antigen affinity purification

Recommended Dilutions:

WB 1:1000-1:4000

IHC 1:50-1:500

IF/ICC 1:200-1:800

Applications

Tested Applications:

WB, IHC, IF/ICC, ELISA

Cited Applications:

WB, IHC, IF, IP

Species Specificity:

human, mouse, rat

Cited Species:

human, mouse, rat

Note-IHC: suggested antigen retrieval with TE buffer pH 9.0; (*) Alternatively, antigen retrieval may be performed with citrate buffer pH 6.0

Positive Controls:

WB: Jurkat cells, HeLa cells, Neuro-2a cells

IHC: mouse brain tissue, human stomach cancer tissue

IF/ICC: HepG2 cells,

Background Information

BCAT1, also named branched-chain amino acid transaminase1, is a cytosolic enzyme responsible for the reversible transamination of leucine, isoleucine, and valine that catalyzes the transformation of branched-chain L-amino acids (BCAA) into branched-chain α -ketoacids (BCKA), thereby providing macromolecule precursors. It has been reported that BCAT1 is associated with tumor growth and disease progression (PMID:29255149). The 13640-1-AP antibody detects the bands around 43-45 kDa for different isoforms and higher molecular weight for phosphorylation modification of this protein.

Notable Publications

Author	Pubmed ID	Journal	Application
Lili Tan	36182869	Biochem Biophys Res Commun	WB, IF
Yunyun Liu	36176992	Front Cardiovasc Med	WB
Haikuo Li	36265491	Cell Metab	IF

Storage

Storage:

Store at -20°C. Stable for one year after shipment.

Storage Buffer:

PBS with 0.02% sodium azide and 50% glycerol, pH7.3

Aliquoting is unnecessary for -20°C storage

*** 20ul sizes contain 0.1% BSA

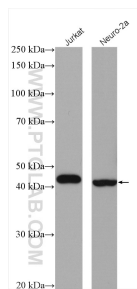
For technical support and original validation data for this product please contact:

T: 1 (888) 4PTGLAB (1-888-478-4522) (toll free in USA), or 1(312) 455-8498 (outside USA)

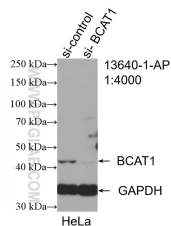
E: proteintech@ptglab.com
W: ptglab.com

This product is exclusively available under Proteintech Group brand and is not available to purchase from any other manufacturer.

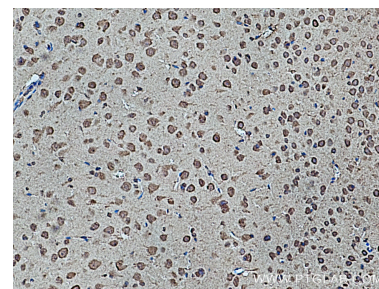
Selected Validation Data



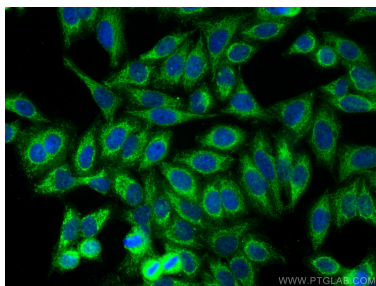
Various lysates were subjected to SDS PAGE followed by western blot with 13640-1-AP (BCAT1/ECA39 antibody) at dilution of 1:2000 incubated at room temperature for 1.5 hours.



WB result of BCAT1/ECA39 antibody (13640-1-AP; 1:4000; incubated at room temperature for 1.5 hours) with sh-Control and sh-BCAT1/ECA39 transfected HeLa cells.



Immunohistochemical analysis of paraffin-embedded mouse brain tissue slide using 13640-1-AP (BCAT1/ECA39 antibody) at dilution of 1:200 (under 10x lens). Heat mediated antigen retrieval with Tris-EDTA buffer (pH 9.0).



Immunofluorescent analysis of (-20°C Ethanol) fixed HepG2 cells using BCAT1 antibody (13640-1-AP) at dilution of 1:400 and CoraLite®488-Conjugated AffiniPure Goat Anti-Rabbit IgG(H+L) (SA00013-2).