

For Research Use Only

NARFL Polyclonal antibody

Catalog Number: 13652-1-AP

1 Publications



Basic Information

Catalog Number:

13652-1-AP

Size:

150ul, Concentration: 450 ug/ml by Nanodrop and 300 ug/ml by Bradford method using BSA as the standard;

Source:

Rabbit

Isotype:

IgG

Immunogen Catalog Number:

AG4217

GenBank Accession Number:

BC030248

GeneID (NCBI):

64428

UNIPROT ID:

Q9H6Q4

Full Name:

nuclear prelamin A recognition factor-like

Calculated MW:

476 aa, 53 kDa

Observed MW:

26-28 kDa

Purification Method:

Antigen affinity purification

Recommended Dilutions:

WB 1:1000-1:4000

IHC 1:50-1:500

Applications

Tested Applications:

WB, IHC, ELISA

Cited Applications:

IF

Species Specificity:

human, mouse, rat

Cited Species:

human

Positive Controls:

WB : HeLa cells, HEK-293 cells

IHC : human colon tissue,

Note-IHC: suggested antigen retrieval with TE buffer pH 9.0; (*) Alternatively, antigen retrieval may be performed with citrate buffer pH 6.0

Background Information

NARFL(Nuclear prelamin A recognition factor-like protein) is also named as PRN and belongs to the NARF family. This protein plays a role in cytoplasmic Fe-S protein biogenesis in mammalian cells. NARFL has 3 isoforms produced by alternative splicing.

Notable Publications

Author	Pubmed ID	Journal	Application
Hongzhou Liu	37821486	Sci Rep	IF

Storage

Storage:

Store at -20°C. Stable for one year after shipment.

Storage Buffer:

PBS with 0.02% sodium azide and 50% glycerol pH 7.3.

Aliquoting is unnecessary for -20°C storage

*** 20ul sizes contain 0.1% BSA

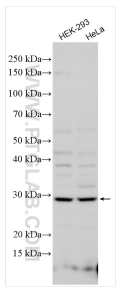
For technical support and original validation data for this product please contact:

T: 1 (888) 4PTGLAB (1-888-478-4522) (toll free in USA), or 1(312) 455-8498 (outside USA)

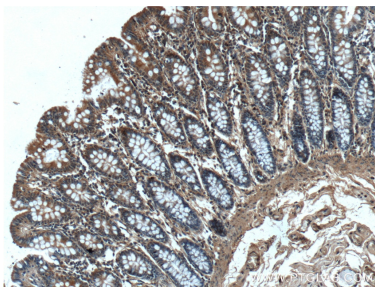
E: proteintech@ptglab.com
W: ptglab.com

This product is exclusively available under Proteintech Group brand and is not available to purchase from any other manufacturer.

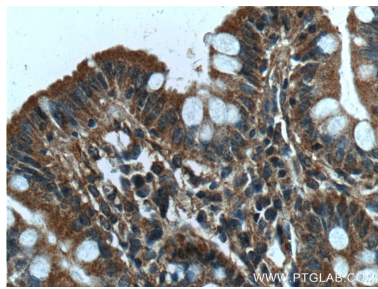
Selected Validation Data



Various lysates were subjected to SDS PAGE followed by western blot with 13652-1-AP (NARFL antibody) at dilution of 1:2000 incubated at room temperature for 1.5 hours.



Immunohistochemical analysis of paraffin-embedded human colon tissue slide using 13652-1-AP (NARFL antibody) at dilution of 1:200 (under 10x lens).



Immunohistochemical analysis of paraffin-embedded human colon tissue slide using 13652-1-AP (NARFL antibody) at dilution of 1:200 (under 40x lens).