

For Research Use Only

# ENTPD2 Polyclonal antibody

Catalog Number: 13656-1-AP

1 Publications



## Basic Information

### Catalog Number:

13656-1-AP

### Size:

150ul, Concentration: 500 ug/ml by Nanodrop and 300 ug/ml by Bradford method using BSA as the standard;

### Source:

Rabbit

### Isotype:

IgG

### Immunogen Catalog Number:

AG4513

### GenBank Accession Number:

BC035738

### GeneID (NCBI):

954

### UNIPROT ID:

Q9Y5L3

### Full Name:

ectonucleoside triphosphate diphosphohydrolase 2

### Calculated MW:

495 aa, 54 kDa

### Observed MW:

70 kDa

### Purification Method:

Antigen affinity purification

### Recommended Dilutions:

WB 1:1000-1:4000

IP 0.5-4.0 ug for 1.0-3.0 mg of total protein lysate

IHC 1:100-1:400

## Applications

### Tested Applications:

WB, IP, IHC, ELISA

### Cited Applications:

IHC

### Species Specificity:

human

### Cited Species:

rat

**Note-IHC: suggested antigen retrieval with TE buffer pH 9.0; (\*) Alternatively, antigen retrieval may be performed with citrate buffer pH 6.0**

### Positive Controls:

WB : human placenta tissue, K-562 cells

IP : K-562 cells,

IHC : human small intestine tissue,

## Background Information

ENTPD2(Ectonucleoside triphosphate diphosphohydrolase 2) is also named as CD39L1, Ecto-ATPase 2 and belongs to the GDA1/CD39 NTPase family. In the nervous system, it could hydrolyze ATP and other nucleotides to regulate purinergic neurotransmission. This protein has 3 isoforms produced by alternative splicing.

## Notable Publications

Author	Pubmed ID	Journal	Application
Moyuru Hayashi	33146549	Am J Physiol Gastrointest Liver Physiol	IHC

## Storage

### Storage:

Store at -20°C. Stable for one year after shipment.

### Storage Buffer:

PBS with 0.02% sodium azide and 50% glycerol pH 7.3.

Aliquoting is unnecessary for -20°C storage

\*\*\* 20ul sizes contain 0.1% BSA

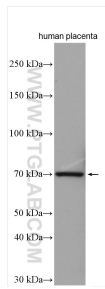
For technical support and original validation data for this product please contact:

T: 1 (888) 4PTGLAB (1-888-478-4522) (toll free in USA), or 1(312) 455-8498 (outside USA)

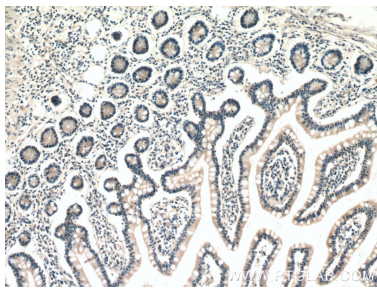
E: [proteintech@ptglab.com](mailto:proteintech@ptglab.com)  
W: [ptglab.com](http://ptglab.com)

This product is exclusively available under Proteintech Group brand and is not available to purchase from any other manufacturer.

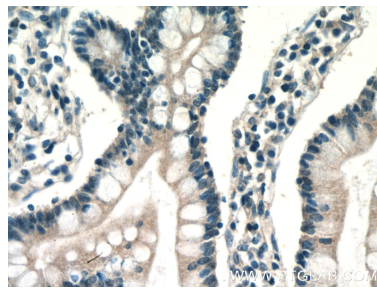
Selected Validation Data



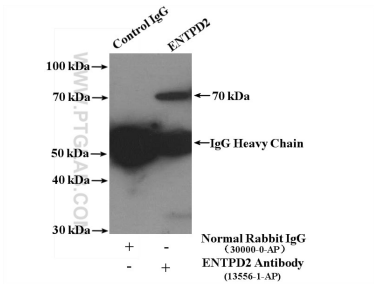
human placenta tissue were subjected to SDS PAGE followed by western blot with 13656-1-AP (ENTPD2 antibody) at dilution of 1:2000 incubated at room temperature for 1.5 hours.



Immunohistochemical analysis of paraffin-embedded human small intestine tissue slide using 13656-1-AP (ENTPD2 antibody) at dilution of 1:200 (under 10x lens).



Immunohistochemical analysis of paraffin-embedded human small intestine tissue slide using 13656-1-AP (ENTPD2 antibody) at dilution of 1:200 (under 40x lens).



IP result of anti-ENTPD2 (IP:13656-1-AP, 4ug; Detection:13656-1-AP 1:300) with K-562 cells lysate 4000ug.