

For Research Use Only

CDC14A Polyclonal antibody

Catalog Number: 13660-1-AP

1 Publications



Basic Information

Catalog Number:

13660-1-AP

Size:

150ul, Concentration: 200 ug/ml by Nanodrop and 133 ug/ml by Bradford method using BSA as the standard;

Source:

Rabbit

Isotype:

IgG

Immunogen Catalog Number:

AG4556

GenBank Accession Number:

BC038979

GeneID (NCBI):

8556

UNIPROT ID:

Q9UNH5

Full Name:

CDC14 cell division cycle 14 homolog A (S. cerevisiae)

Calculated MW:

594 aa, 66 kDa

Observed MW:

66 kDa

Purification Method:

Antigen affinity purification

Recommended Dilutions:

WB 1:500-1:2000

Applications

Tested Applications:

WB, ELISA

Cited Applications:

WB

Species Specificity:

human, mouse, rat

Cited Species:

mouse

Positive Controls:

WB : human heart tissue, human brain tissue, HeLa cells, COLO 320 cells

Notable Publications

Author	Pubmed ID	Journal	Application
Haiying Hu	31545409	Mol. Med Rep	WB

Storage

Storage:

Store at -20°C. Stable for one year after shipment.

Storage Buffer:

PBS with 0.02% sodium azide and 50% glycerol pH 7.3.

Aliquoting is unnecessary for -20°C storage

*** 20ul sizes contain 0.1% BSA

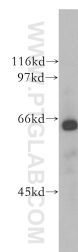
For technical support and original validation data for this product please contact:

T: 1 (888) 4PTGLAB (1-888-478-4522) (toll free in USA), or 1(312) 455-8498 (outside USA)

E: proteintech@ptglab.com
W: ptglab.com

This product is exclusively available under Proteintech Group brand and is not available to purchase from any other manufacturer.

Selected Validation Data



human heart tissue were subjected to SDS PAGE followed by western blot with 13660-1-AP (CDC14A antibody) at dilution of 1:500 incubated at room temperature for 1.5 hours.