

For Research Use Only

# BCKDHB Polyclonal antibody

Catalog Number: 13685-1-AP

10 Publications



## Basic Information

Catalog Number:

13685-1-AP

Size:

150ul, Concentration: 350 ug/ml by Nanodrop;

Source:

Rabbit

Isotype:

IgG

Immunogen Catalog Number:

AG4552

GenBank Accession Number:

BC040139

GeneID (NCBI):

594

UNIPROT ID:

P21953

Full Name:

branched chain keto acid dehydrogenase E1, beta polypeptide

Calculated MW:

392 aa, 43 kDa

Observed MW:

37 kDa

Purification Method:

Antigen affinity purification

Recommended Dilutions:

WB 1:500-1:2000

IHC 1:50-1:500

## Applications

Tested Applications:

WB, IHC, ELISA

Cited Applications:

WB, IHC, RIP

Species Specificity:

human, mouse, rat

Cited Species:

human, mouse, sheep

**Note-IHC: suggested antigen retrieval with TE buffer pH 9.0; (\*) Alternatively, antigen retrieval may be performed with citrate buffer pH 6.0**

Positive Controls:

WB: mouse liver tissue, Transfected HEK-293 cells, rat liver tissue

IHC: human colon cancer tissue, human stomach tissue

## Background Information

Branched-chain alpha-keto acid dehydrogenase E1 component beta chain (BCKDHB; BCKDE1B; BCKDH E1-beta) is a subunit of the BCKDH complex, which is a mitochondrial enzyme in the degradation pathway for branched-chain amino acids (BCAA). Together with BCKDHA, BCKDHB forms the E1 subunit of this complex, whereas DBT and DLD are the E2 and E3 subunits, respectively. A deficiency of the BCKDH complex in humans causes maple syrup urine disease (MSUD), a severe neurometabolic disorder diagnosed by the detection of alloisoleucine in plasma (MIM 248600). (PMID: 30709776)

## Notable Publications

Author	Pubmed ID	Journal	Application
Yanan Wang	36433955	Nat Commun	IHC
Dongdong Yang	36417878	Cell Rep	WB
Tao Shi	29575645	Anim Sci J	WB

## Storage

Storage:

Store at -20°C. Stable for one year after shipment.

Storage Buffer:

PBS with 0.02% sodium azide and 50% glycerol pH 7.3.

Aliquoting is unnecessary for -20°C storage

\*\*\* 20ul sizes contain 0.1% BSA

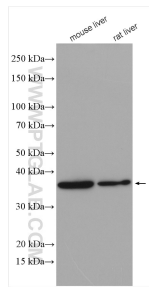
For technical support and original validation data for this product please contact:

T: 1 (888) 4PTGLAB (1-888-478-4522) (toll free in USA), or 1(312) 455-8498 (outside USA)

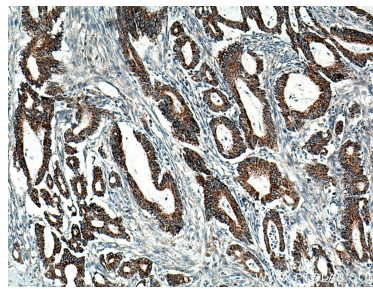
E: proteintech@ptglab.com  
W: ptglab.com

This product is exclusively available under Proteintech Group brand and is not available to purchase from any other manufacturer.

## Selected Validation Data



Various lysates were subjected to SDS PAGE followed by western blot with 13685-1-AP (BCKDHB antibody) at dilution of 1:1000 incubated at room temperature for 1.5 hours.



Immunohistochemical analysis of paraffin-embedded human colon cancer tissue slide using 13685-1-AP (BCKDHB antibody) at dilution of 1:200 (under 10x lens). Heat mediated antigen retrieval with Tris-EDTA buffer (pH 9.0).