

For Research Use Only

NEDD4L Polyclonal antibody

Catalog Number: 13690-1-AP

Featured Product

47 Publications



Basic Information

Catalog Number:

13690-1-AP

Size:

150ul, Concentration: 700 ug/ml by Nanodrop;

Source:

Rabbit

Isotype:

IgG

Immunogen Catalog Number:

AG4565

GenBank Accession Number:

BC032597

GeneID (NCBI):

23327

UNIPROT ID:

Q96PU5

Full Name:

neural precursor cell expressed, developmentally down-regulated 4-like

Calculated MW:

854 aa, 96 kDa

Observed MW:

112 kDa, 125 kDa

Purification Method:

Antigen affinity purification

Recommended Dilutions:

WB 1:1000-1:5000

IP 0.5-4.0 ug for 1.0-3.0 mg of total protein lysate

IHC 1:50-1:500

IF/ICC 1:50-1:500

Applications

Tested Applications:

WB, IHC, IF/ICC, IP, ELISA

Cited Applications:

WB, IHC, IF, IP, CoIP

Species Specificity:

human, mouse, rat

Cited Species:

human, mouse, rat, pig

Positive Controls:

WB : C6 cells, HT-1080 cells, PC-3 cells, PC-12 cells

IP : C6 cells,

IHC : human prostate cancer tissue, human stomach cancer tissue

IF/ICC : PC-3 cells,

Note-IHC: suggested antigen retrieval with TE buffer pH 9.0; (*) Alternatively, antigen retrieval may be performed with citrate buffer pH 6.0

Background Information

NEDD4L(E3 ubiquitin-protein ligase NEDD4-like) is also named as KIAA0439, NEDL3, Nedd4-2. It accepts ubiquitin from an E2 ubiquitin-conjugating enzyme in the form of a thioester and then directly transfers the ubiquitin to targeted substrates and is the principal ubiquitin ligase that selectively targets activated SMAD2 and SMAD3 for destruction (PMID:19917253). Nedd4L binds the PY motif of ENaC COOH terminals and catalyzes ubiquitination of the NH2 terminus of the protein for subsequent degradation (PMID:18268134). It has some isoforms produced by alternative splicing. This antibody may have cross reaction with NEDD4 due to the high homology of the antigen.

Notable Publications

Author	Pubmed ID	Journal	Application
Siyuan Chen	30224386	J Exp Med	WB
Pan Wang	34582065	FASEB J	WB,IP
Gao Chengcheng C	21909941	Med Oncol	IHC

Storage

Storage:

Store at -20°C. Stable for one year after shipment.

Storage Buffer:

PBS with 0.02% sodium azide and 50% glycerol pH 7.3.

Aliquoting is unnecessary for -20°C storage

*** 20ul sizes contain 0.1% BSA

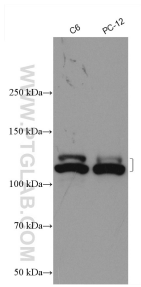
For technical support and original validation data for this product please contact:

T: 1 (888) 4PTGLAB (1-888-478-4522) (toll free in USA), or 1(312) 455-8498 (outside USA)

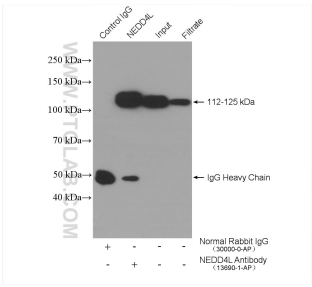
E: proteintech@ptglab.com
W: ptglab.com

This product is exclusively available under Proteintech Group brand and is not available to purchase from any other manufacturer.

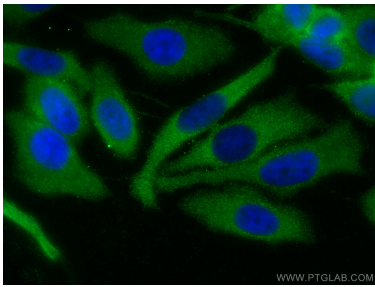
Selected Validation Data



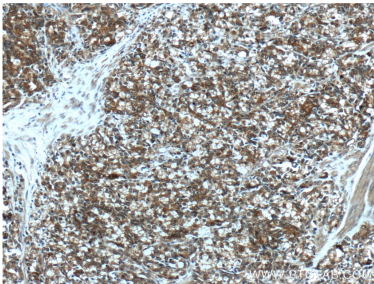
Various lysates were subjected to SDS PAGE followed by western blot with 13690-1-AP (NEDD4L antibody) at dilution of 1:2500 incubated at room temperature for 1.5 hours.



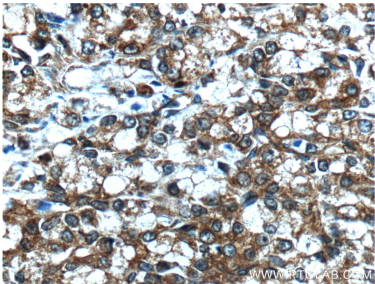
IP result of anti-NEDD4L (IP:13690-1-AP, 4ug; Detection:13690-1-AP 1:300) with C6 cells lysate 1000 ug.



Immunofluorescent analysis of (-20°C Methanol) fixed PC-3 cells using NEDD4L antibody (13690-1-AP) at dilution of 1:200 and CoraLite@488-Conjugated Goat Anti-Rabbit IgG(H+L).



Immunohistochemical analysis of paraffin-embedded human prostate cancer tissue slide using 13690-1-AP (NEDD4L Antibody) at dilution of 1:200 (under 10x lens).



Immunohistochemical analysis of paraffin-embedded human prostate cancer tissue slide using 13690-1-AP (NEDD4L Antibody) at dilution of 1:200 (under 40x lens).