

For Research Use Only

# CBR4 Polyclonal antibody

Catalog Number: 13725-1-AP



## Basic Information

**Catalog Number:**

13725-1-AP

**Size:**

150ul , Concentration: 500 ug/ml by Nanodrop and 213 ug/ml by Bradford method using BSA as the standard;

**Source:**

Rabbit

**Isotype:**

IgG

**Immunogen Catalog Number:**

AG4678

**GenBank Accession Number:**

BC033650

**GeneID (NCBI):**

84869

**UNIPROT ID:**

Q8N4T8

**Full Name:**

carbonyl reductase 4

**Calculated MW:**

237 aa, 25 kDa

**Observed MW:**

28 kDa

**Purification Method:**

Antigen affinity purification

**Recommended Dilutions:**

WB 1:500-1:1000

IP 0.5-4.0 ug for 1.0-3.0 mg of total protein lysate

IHC 1:20-1:200

## Applications

**Tested Applications:**

WB, IP, IHC, ELISA

**Species Specificity:**

human, mouse, rat

**Note-IHC: suggested antigen retrieval with TE buffer pH 9.0; (\*) Alternatively, antigen retrieval may be performed with citrate buffer pH 6.0**

**Positive Controls:**

WB : BxPC-3 cells, HepG2 cells

IP : HepG2 cells,

IHC : human hepatocirrhosis tissue,

## Storage

**Storage:**

Store at -20°C. Stable for one year after shipment.

**Storage Buffer:**

PBS with 0.02% sodium azide and 50% glycerol pH 7.3.

Aliquoting is unnecessary for -20°C storage

\*\*\* 20ul sizes contain 0.1% BSA

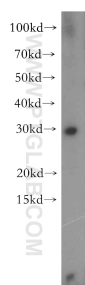
For technical support and original validation data for this product please contact:

T: 1 (888) 4PTGLAB (1-888-478-4522) (toll free in USA), or 1(312) 455-8498 (outside USA)

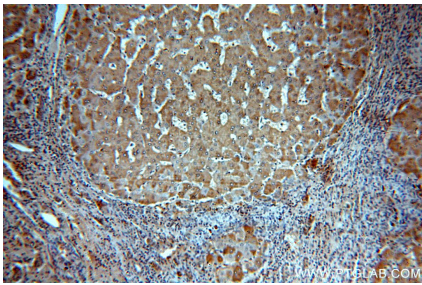
E: [proteintech@ptglab.com](mailto:proteintech@ptglab.com)  
W: [ptglab.com](http://ptglab.com)

This product is exclusively available under Proteintech Group brand and is not available to purchase from any other manufacturer.

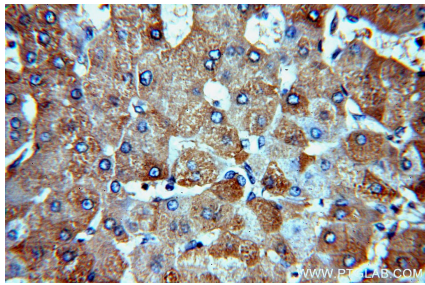
Selected Validation Data



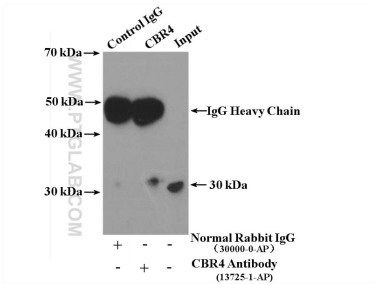
BxPC-3 cells were subjected to SDS PAGE followed by western blot with 13725-1-AP (CBR4 antibody) at dilution of 1:500 incubated at room temperature for 1.5 hours.



Immunohistochemical analysis of paraffin-embedded human hepatocirrhosis using 13725-1-AP (CBR4 antibody) at dilution of 1:50 (under 10x lens).



Immunohistochemical analysis of paraffin-embedded human hepatocirrhosis using 13725-1-AP (CBR4 antibody) at dilution of 1:50 (under 40x lens).



IP result of anti-CBR4 (IP:13725-1-AP, 4ug; Detection:13725-1-AP 1:300) with HepG2 cells lysate 3400ug.