

For Research Use Only

MTG1 Polyclonal antibody

Catalog Number: 13742-1-AP **1 Publications**



Basic Information

Catalog Number: 13742-1-AP	GenBank Accession Number: BC035721	Purification Method: Antigen affinity purification
Size: 150ul , Concentration: 300 µg/ml by Nanodrop and 173 µg/ml by Bradford method using BSA as the standard;	GeneID (NCBI): 92170	Recommended Dilutions: WB 1:1000-1:4000 IF 1:20-1:200
Source: Rabbit	Full Name: mitochondrial GTPase 1 homolog (S. cerevisiae)	
Isotype: IgG	Calculated MW: 300 aa, 33 kDa	
Immunogen Catalog Number: AG4681	Observed MW: 37 kDa	

Applications

Tested Applications: IF, WB, ELISA	Positive Controls: WB : human brain tissue, human liver tissue IF : SH-SY5Y cells,
Cited Applications: WB	
Species Specificity: human	
Cited Species: human	

Background Information

Notable Publications

Author	Pubmed ID	Journal	Application
Elena Lavdovskaia	30085210	Nucleic Acids Res	WB

Storage

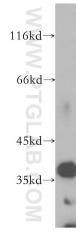
Storage:
Store at -20°C. Stable for one year after shipment.
Storage Buffer:
PBS with 0.02% sodium azide and 50% glycerol pH 7.3.
Aliquoting is unnecessary for -20°C storage

*** 20ul sizes contain 0.1% BSA

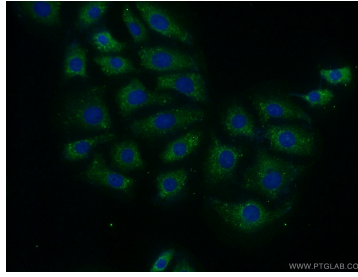
For technical support and original validation data for this product please contact:
T: 1 (888) 4PTGLAB (1-888-478-4522) (toll free in USA), or 1(312) 455-8498 (outside USA)
E: proteintech@ptglab.com
W: ptglab.com

This product is exclusively available under Proteintech Group brand and is not available to purchase from any other manufacturer.

Selected Validation Data



human brain tissue were subjected to SDS PAGE followed by western blot with 13742-1-AP (MTG1 antibody) at dilution of 1:300 incubated at room temperature for 1.5 hours.



Immunofluorescent analysis of (-20°C Ethanol) fixed SH-SY5Y cells using 13742-1-AP (MTG1 antibody) at dilution of 1:50 and Alexa Fluor 488-conjugated AffiniPure Goat Anti-Rabbit IgG(H+L).